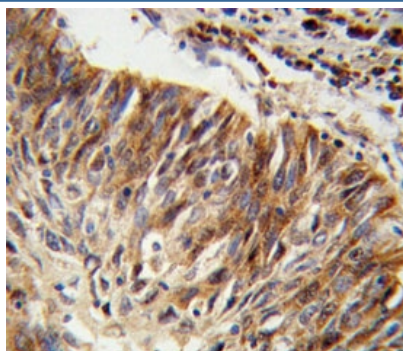


## Aldehyde dehydrogenase family 3 member B1 Antibody / ALDH3B1 (F54993)

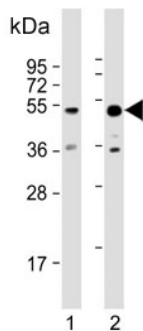
Catalog No.	Formulation	Size
F54993-0.4ML	In 1X PBS, pH 7.4, with 0.09% sodium azide	0.4 ml
F54993-0.08ML	In 1X PBS, pH 7.4, with 0.09% sodium azide	0.08 ml

[Bulk quote request](#)

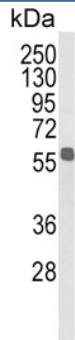
<b>Availability</b>	1-3 business days
<b>Species Reactivity</b>	Human
<b>Format</b>	Purified
<b>Clonality</b>	Polyclonal (rabbit origin)
<b>Isotype</b>	Rabbit Ig
<b>Purity</b>	Antigen affinity purified
<b>UniProt</b>	P43353
<b>Applications</b>	Immunohistochemistry (FFPE) : 1:10-1:50 Western blot : 1:500-1:1000
<b>Limitations</b>	This Aldehyde dehydrogenase family 3 member B1 antibody is available for research use only.



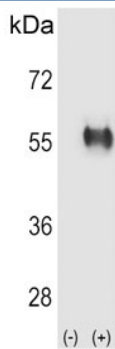
IHC testing of FFPE human lung carcinoma tissue with Aldehyde dehydrogenase family 3 member B1 antibody. HIER: steam section in pH6 citrate buffer for 20 min and allow to cool prior to staining.



Western blot testing of human 1) kidney and 2) K562 cell lysate with Aldehyde dehydrogenase family 3 member B1 antibody. Predicted molecular weight ~52 kDa.



Western blot testing of human MDA-MB-231 cell lysate with Aldehyde dehydrogenase family 3 member B1 antibody. Predicted molecular weight ~52 kDa.



Western blot testing of 1) non-transfected and 2) transfected 293 cell lysate with Aldehyde dehydrogenase family 3 member B1 antibody.

## Description

The aldehyde dehydrogenases are a family of isozymes that may play a major role in the detoxification of aldehydes generated by alcohol metabolism and lipid peroxidation.

## Application Notes

The stated application concentrations are suggested starting points. Titration of the Aldehyde dehydrogenase family 3 member B1 antibody may be required due to differences in protocols and secondary/substrate sensitivity.

## Immunogen

A portion of amino acids 334-360 from the human protein was used as the immunogen for the Aldehyde dehydrogenase family 3 member B1 antibody.

## Storage

Aliquot the Aldehyde dehydrogenase family 3 member B1 antibody and store frozen at -20oC or colder. Avoid repeated freeze-thaw cycles.

