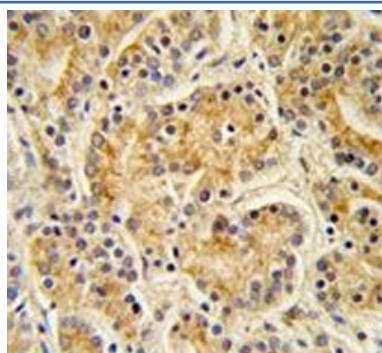


MOB kinase activator 1A Antibody / MOB1A / MOBKL1B (F54922)

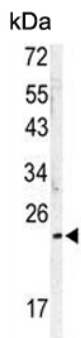
Catalog No.	Formulation	Size
F54922-0.4ML	In 1X PBS, pH 7.4, with 0.09% sodium azide	0.4 ml
F54922-0.08ML	In 1X PBS, pH 7.4, with 0.09% sodium azide	0.08 ml

[Bulk quote request](#)

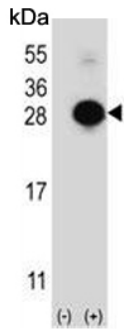
Availability	1-3 business days
Species Reactivity	Human
Format	Purified
Clonality	Polyclonal (rabbit origin)
Isotype	Rabbit Ig
Purity	Purified
UniProt	Q9H8S9
Localization	Cytoplasmic, nuclear, extracellular
Applications	Flow cytometry : 1:10-1:50 (1x10e6 cells) Western blot : 1:500-1:1000 Immunohistochemistry (FFPE) : 1:50-1:100
Limitations	This MOB kinase activator 1A antibody is available for research use only.



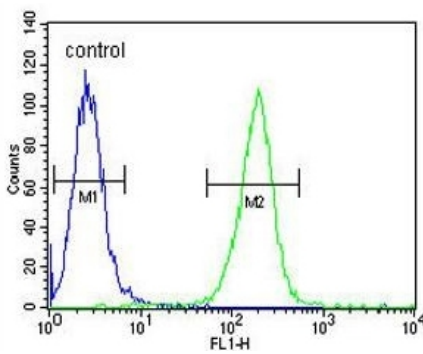
IHC testing of FFPE human prostate carcinoma tissue with MOB kinase activator 1A antibody. HIER: steam section in pH6 citrate buffer for 20 min and allow to cool prior to staining.



Western blot testing of human A2058 cell lysate with MOB kinase activator 1A antibody. Predicted molecular weight ~25 kDa.



Western blot testing of 1) non-transfected and 2) transfected 293 cell lysate with MOB kinase activator 1A antibody.



Flow cytometry testing of human A2058 cells with MOB kinase activator 1A antibody; Blue=isotype control, Green= MOB kinase activator 1A antibody.

Description

MOB1A / MOBKL1B stimulates the kinase activity of STK38 and STK38L.

Application Notes

The stated application concentrations are suggested starting points. Titration of the MOB kinase activator 1A antibody may be required due to differences in protocols and secondary/substrate sensitivity.

Immunogen

A portion of amino acids 188-216 from the human protein was used as the immunogen for the MOB kinase activator 1A antibody.

Storage

Aliquot the MOB kinase activator 1A antibody and store frozen at -20oC or colder. Avoid repeated freeze-thaw cycles.

