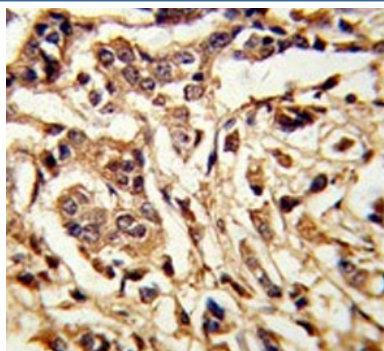


## Galactose-1-phosphate uridylyltransferase Antibody / GALT (F54894)

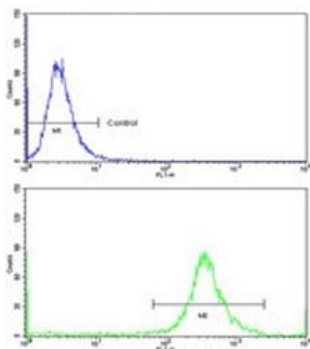
Catalog No.	Formulation	Size
F54894-0.4ML	In 1X PBS, pH 7.4, with 0.09% sodium azide	0.4 ml
F54894-0.08ML	In 1X PBS, pH 7.4, with 0.09% sodium azide	0.08 ml

[Bulk quote request](#)

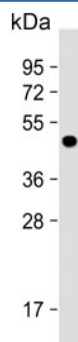
<b>Availability</b>	1-3 business days
<b>Species Reactivity</b>	Human
<b>Format</b>	Purified
<b>Clonality</b>	Polyclonal (rabbit origin)
<b>Isotype</b>	Rabbit Ig
<b>Purity</b>	Antigen affinity purified
<b>UniProt</b>	P07902
<b>Localization</b>	Cytoplasmic
<b>Applications</b>	Flow cytometry : 1:10-1:50 (1x10e6 cells) Immunohistochemistry (FFPE) : 1:50-1:100 Western blot : 1:500-1:1000
<b>Limitations</b>	This Galactose-1-phosphate uridylyltransferase antibody is available for research use only.



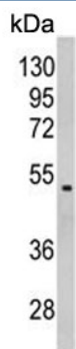
IHC testing of FFPE human breast carcinoma tissue with Galactose-1-phosphate uridylyltransferase antibody. HIER: steam section in pH6 citrate buffer for 20 min and allow to cool prior to staining.



Flow cytometry testing of human MDA-MB-468 cells with Galactose-1-phosphate uridylyltransferase antibody; Blue=isotype control, Green= Galactose-1-phosphate uridylyltransferase antibody.



Western blot testing of human HepG2 cell lysate with Galactose-1-phosphate uridylyltransferase antibody. Predicted molecular weight ~43 kDa.



Western blot testing of human MDA-MB-231 cell lysate with Galactose-1-phosphate uridylyltransferase antibody. Predicted molecular weight ~43 kDa.

## Description

Galactose-1-phosphate uridylyl transferase (GALT) catalyzes the second step of the Leloir pathway of galactose metabolism, namely the conversion of UDP-glucose + galactose-1-phosphate to glucose-1-phosphate + UDP-galactose. The absence of this enzyme results in classic galactosemia in humans and can be fatal in the newborn period if lactose is not removed from the diet.

## Application Notes

The stated application concentrations are suggested starting points. Titration of the Galactose-1-phosphate uridylyltransferase antibody may be required due to differences in protocols and secondary/substrate sensitivity.

## Immunogen

A portion of amino acids 344-373 from the human protein was used as the immunogen for the Galactose-1-phosphate uridylyltransferase antibody.

## Storage

Aliquot the Galactose-1-phosphate uridylyltransferase antibody and store frozen at -20°C or colder. Avoid repeated freeze-

thaw cycles.

Ordering:Phone:858.663.9055 | Fax:1.267.821.0800 | Email:info@nsjbio.com

Copyright © NSJ Bioreagents. All rights reserved