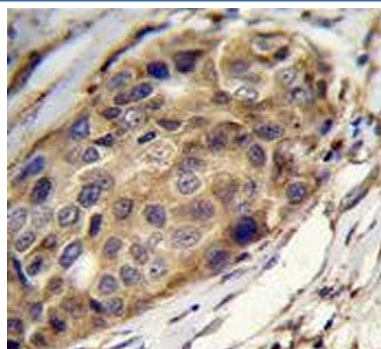


Slingshot homolog 3 Antibody / SSH3 (F54610)

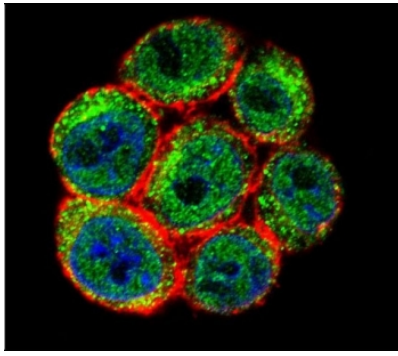
Catalog No.	Formulation	Size
F54610-0.4ML	In 1X PBS, pH 7.4, with 0.09% sodium azide	0.4 ml
F54610-0.08ML	In 1X PBS, pH 7.4, with 0.09% sodium azide	0.08 ml

[Bulk quote request](#)

Availability	1-3 business days
Species Reactivity	Human
Format	Purified
Clonality	Polyclonal (rabbit origin)
Isotype	Rabbit Ig
Purity	Antigen affinity purified
UniProt	Q8TE77
Localization	Cytoplasmic, nuclear
Applications	Immunofluorescence : 1:25 Flow cytometry : 1:25 (1x10 ⁶ cells) Immunohistochemistry (FFPE) : 1:25 Western blot : 1:500-1:2000
Limitations	This Slingshot homolog 3 antibody is available for research use only.



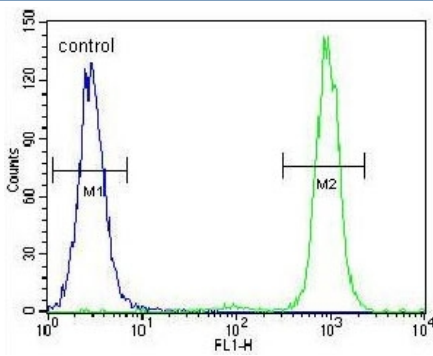
IHC testing of FFPE human breast carcinoma tissue with Slingshot homolog 3 antibody.
HIER: steam section in pH6 citrate buffer for 20 min and allow to cool prior to staining.



Immunofluorescent staining of human HeLa cells with Slingshot homolog 3 antibody (green), DAPI nuclear stain (blue) and anti-Actin (red).



Western blot testing of human ZR-75-1 cell lysate with Slingshot homolog 3 antibody. Predicted molecular weight ~73 kDa, can be observed at 90-95 kDa.



Flow cytometry testing of human HeLa cells with Slingshot homolog 3 antibody; Blue=isotype control, Green= Slingshot homolog 3 antibody.

Description

The ADF (actin-depolymerizing factor)/cofilin family is composed of stimulus-responsive mediators of actin dynamics. ADF/cofilin proteins are inactivated by kinases such as LIM domain kinase-1 (LIMK1). The SSH family appears to play a role in actin dynamics by reactivating ADF/cofilin proteins *in vivo*.

Application Notes

The stated application concentrations are suggested starting points. Titration of the Slingshot homolog 3 antibody may be required due to differences in protocols and secondary/substrate sensitivity.

Immunogen

A portion of amino acids 575-602 from the human protein was used as the immunogen for the Slingshot homolog 3 antibody.

Storage

Aliquot the Slingshot homolog 3 antibody and store frozen at -20°C or colder. Avoid repeated freeze-thaw cycles.

