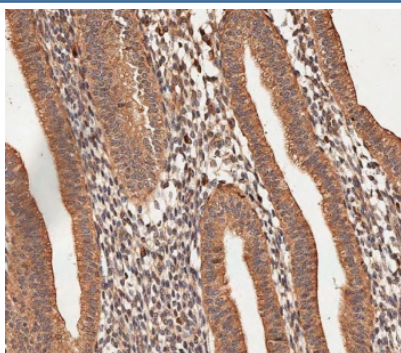


## COL5A1 Antibody (F54339)

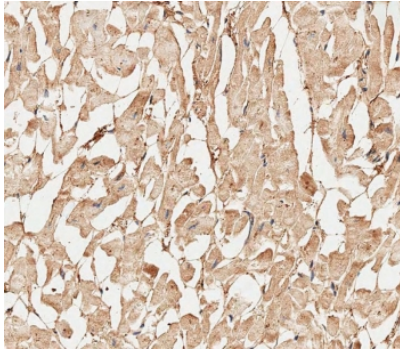
| Catalog No.   | Formulation                                | Size    |
|---------------|--|---------|
| F54339-0.4ML  | In 1X PBS, pH 7.4, with 0.09% sodium azide | 0.4 ml  |
| F54339-0.08ML | In 1X PBS, pH 7.4, with 0.09% sodium azide | 0.08 ml |

[Bulk quote request](#)

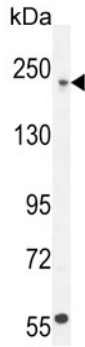
|                           |   |
|---------------------------|---|
| <b>Availability</b>       | 1-3 business days   |
| <b>Species Reactivity</b> | Human, Mouse  |
| <b>Format</b>             | Purified  |
| <b>Clonality</b>          | Polyclonal (rabbit origin)  |
| <b>Isotype</b>            | Rabbit IgG  |
| <b>Purity</b>             | Antigen affinity purified   |
| <b>UniProt</b>            | P20908  |
| <b>Applications</b>       | Immunohistochemistry (FFPE) : 1:25<br>Western blot : 1:500-1:2000 |
| <b>Limitations</b>        | This COL5A1 antibody is available for research use only.          |



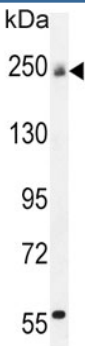
IHC testing of FFPE human uterus tissue with COL5A1 antibody. HIER: steam section in pH9 EDTA for 20 min and allow to cool prior to staining.



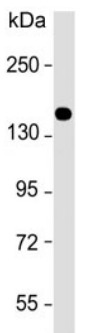
IHC testing of FFPE human heart tissue with COL5A1 antibody. HIER: steam section in pH9 EDTA for 20 min and allow to cool prior to staining.



Western blot testing of human U251 cell lysate with COL5A1 antibody. Predicted molecular weight ~184 kDa but can be observed at up to ~250 kDa.



Western blot testing of mouse bladder lysate with COL5A1 antibody. Predicted molecular weight ~184 kDa but can be observed at up to ~250 kDa.



Western blot testing of human HeLa cell lysate with COL5A1 antibody. Predicted molecular weight ~184 kDa but can be observed at up to ~250 kDa.

## Description

COL5A1 encodes an alpha chain for one of the low abundance fibrillar collagens. Fibrillar collagen molecules are trimers that can be composed of one or more types of alpha chains. Type V collagen is found in tissues containing type I collagen and appears to regulate the assembly of heterotypic fibers composed of both type I and type V collagen. COL5A1 product is closely related to type XI collagen and it is possible that the collagen chains of types V and XI constitute a single collagen type with tissue-specific chain combinations. Mutations in this gene are associated with Ehlers-Danlos syndrome, types I and II. [provided by RefSeq].

## Application Notes

The stated application concentrations are suggested starting points. Titration of the COL5A1 antibody may be required due to differences in protocols and secondary/substrate sensitivity.

## Immunogen

A portion of amino acids 54-82 from the human protein was used as the immunogen for the COL5A1 antibody.

## Storage

Aliquot the COL5A1 antibody and store frozen at -20oC or colder. Avoid repeated freeze-thaw cycles.