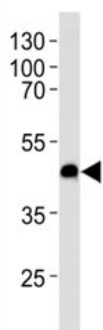


CXCR7 Antibody (F51343)

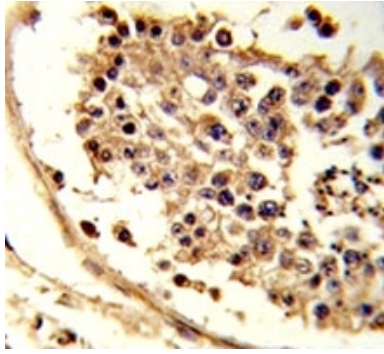
Catalog No.	Formulation	Size
F51343-0.4ML	In 1X PBS, pH 7.4, with 0.09% sodium azide	0.4 ml
F51343-0.08ML	In 1X PBS, pH 7.4, with 0.09% sodium azide	0.08 ml

[Bulk quote request](#)

Availability	1-3 business days
Species Reactivity	Human
Predicted Reactivity	Mouse, Rat
Format	Antigen affinity purified
Clonality	Polyclonal (rabbit origin)
Isotype	Rabbit Ig
Purity	Antigen affinity
UniProt	P25106
Applications	Western blot : 1:1000 IHC (Paraffin) : 1:50-1:100
Limitations	This CXCR7 antibody is available for research use only.



Western blot analysis of lysate from U-251 MG cell line using CXCR7 antibody at 1:1000 for each lane. Predicted molecular weight ~43 kDa.



IHC analysis of FFPE human testis tissue stained with CXCR7 antibody

Description

CXCR7 is a member of the G-protein coupled receptor family. Although this protein was earlier thought to be a receptor for vasoactive intestinal peptide (VIP), it is now considered to be an orphan receptor, in that its endogenous ligand has not been identified. The protein is also a coreceptor for human immunodeficiency viruses (HIV).

Application Notes

Titration of the CXCR7 antibody may be required due to differences in protocols and secondary/substrate sensitivity.

Immunogen

A portion of amino acids 330-358 from the human protein was used as the immunogen for this CXCR7 antibody.

Storage

Aliquot the CXCR7 antibody and store frozen at -20°C or colder. Avoid repeated freeze-thaw cycles.