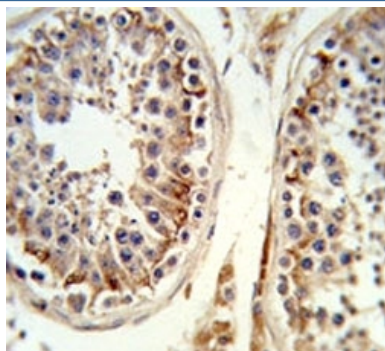


Integrin beta 3 Antibody / ITGB3 / CD61 (F51276)

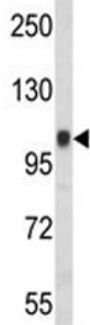
Catalog No.	Formulation	Size
F51276-0.4ML	In 1X PBS, pH 7.4, with 0.09% sodium azide	0.4 ml
F51276-0.08ML	In 1X PBS, pH 7.4, with 0.09% sodium azide	0.08 ml

[Bulk quote request](#)

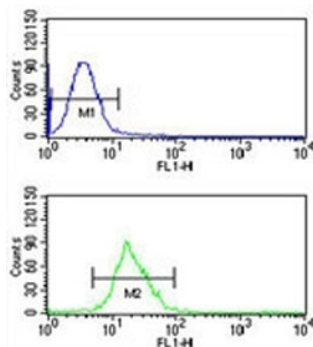
Availability	1-3 business days
Species Reactivity	Human
Predicted Reactivity	Mouse
Format	Antigen affinity purified
Clonality	Polyclonal (rabbit origin)
Isotype	Rabbit Ig
Purity	Antigen affinity
UniProt	P05106
Localization	Cell surface, cytoplasmic
Applications	Western blot : 1:1000 IHC (Paraffin) : 1:50-1:100 Flow Cytometry : 1:10-1:50
Limitations	This Integrin beta 3 antibody is available for research use only.



IHC analysis of FFPE human testis tissue stained with the Integrin beta 3 antibody



Western blot analysis of Integrin beta 3 antibody and CEM lysate. Expected molecular weight: 87-110 kDa depending on glycosylation level.



Integrin beta 3 antibody flow cytometric analysis of CEM cells (bottom histogram) compared to a negative control (top histogram). FITC-conjugated goat-anti-rabbit secondary Ab was used for the analysis.

Description

ITGB3 is the integrin beta chain beta 3. Integrins are integral cell-surface proteins composed of an alpha chain and a beta chain. A given chain may combine with multiple partners resulting in different integrins. Integrin beta 3 is found along with the alpha IIb chain in platelets. Integrins are known to participate in cell adhesion as well as cell-surface mediated signalling.

Application Notes

Titration of the Integrin beta 3 antibody may be required due to differences in protocols and secondary/substrate sensitivity.

Immunogen

A portion of amino acids 734-760 from the human protein was used as the immunogen for this Integrin beta 3 antibody.

Storage

Aliquot the Integrin beta 3 antibody and store frozen at -20°C or colder. Avoid repeated freeze-thaw cycles.