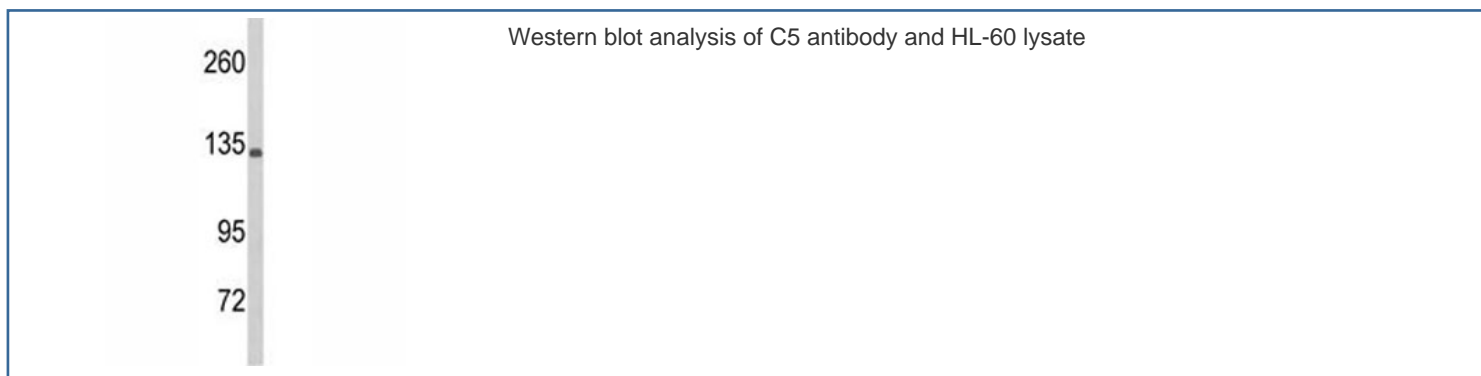


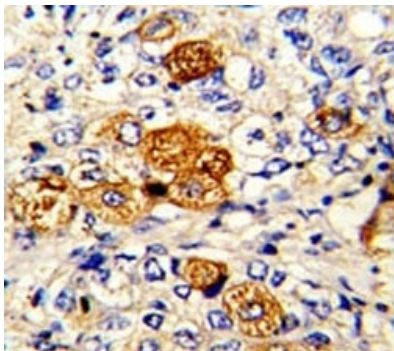
## C5 Antibody (F51211)

Catalog No.	Formulation	Size
F51211-0.4ML	In 1X PBS, pH 7.4, with 0.09% sodium azide	0.4 ml
F51211-0.08ML	In 1X PBS, pH 7.4, with 0.09% sodium azide	0.08 ml

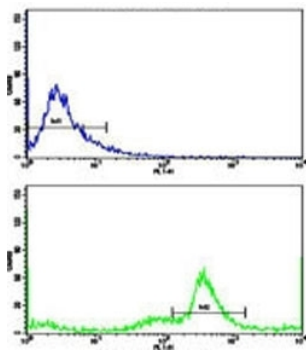
[Bulk quote request](#)

<b>Availability</b>	1-3 business days
<b>Species Reactivity</b>	Human
<b>Format</b>	Antigen affinity purified
<b>Clonality</b>	Polyclonal (rabbit origin)
<b>Isotype</b>	Rabbit Ig
<b>Purity</b>	Antigen affinity
<b>UniProt</b>	P01031
<b>Applications</b>	Western blot : 1:1000 Immunohistochemistry (Paraffin) : 1:50-1:100 Flow cytometry : 1:10-1:50
<b>Limitations</b>	This C5 antibody is available for research use only.





IHC analysis of FFPE human breast carcinoma with C5 antibody



Flow cytometric analysis of MDA-231 cells using C5 antibody (green) compared to a [negative control](#) (blue). FITC-conjugated goat-anti-rabbit secondary Ab was used for the analysis.

## Description

C5 is the fifth component of complement, which plays an important role in inflammatory and cell killing processes. This protein is comprised of alpha and beta polypeptide chains that are linked by a disulfide bridge. An activation peptide, C5a, which is an anaphylatoxin that possesses potent spasmogenic and chemotactic activity, is derived from the alpha polypeptide via cleavage with a convertase. The C5b macromolecular cleavage product can form a complex with the C6 complement component, and this complex is the basis for formation of the membrane attack complex, which includes additional complement components.

## Application Notes

Titration of the C5 antibody may be required due to differences in protocols and secondary/substrate sensitivity.

## Immunogen

A portion of amino acids 253-281 from the human protein was used as the immunogen for this C5 antibody.

## Storage

Aliquot the C5 antibody and store frozen at -20°C or colder. Avoid repeated freeze-thaw cycles.