

Retinoblastoma Antibody (F51209)

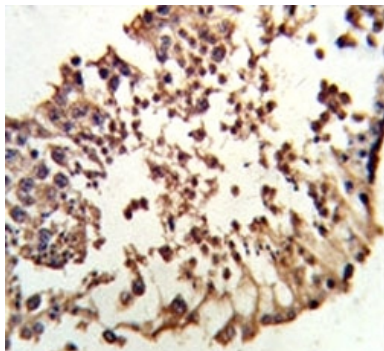
Catalog No.	Formulation	Size
F51209-0.4ML	In 1X PBS, pH 7.4, with 0.09% sodium azide	0.4 ml
F51209-0.08ML	In 1X PBS, pH 7.4, with 0.09% sodium azide	0.08 ml

[Bulk quote request](#)

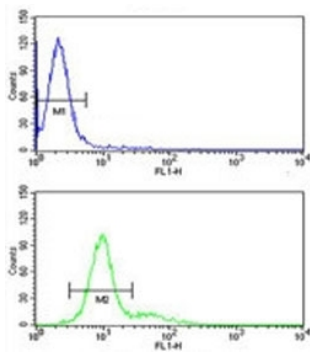
Availability	1-3 business days
Species Reactivity	Human
Predicted Reactivity	Rat
Format	Purified
Clonality	Polyclonal (rabbit origin)
Isotype	Rabbit Ig
Purity	Purified
UniProt	P06400
Applications	Western blot : 1:1000 IHC (Paraffin) : 1:50-1:100 Flow Cytometry : 1:10-1:50
Limitations	This Retinoblastoma antibody is available for research use only.

250
130
95
72
55

Western blot analysis of Retinoblastoma antibody and 293 lysate



IHC analysis of FFPE human testis tissue stained with Retinoblastoma antibody



FACS testing of human 293 cells with Retinoblastoma antibody (green) and a negative control pAb (blue). FITC-conjugated goat-anti-rabbit secondary Ab was used for the analysis.

Description

RB1/Retinoblastoma is a negative regulator of the cell cycle and was the first tumor suppressor gene found. This protein also stabilizes constitutive heterochromatin to maintain the overall chromatin structure. The active, hypophosphorylated form of the protein binds transcription factor E2F1.

Application Notes

Titration of the Retinoblastoma antibody may be required due to differences in protocols and secondary/substrate sensitivity.

Immunogen

A portion of amino acids 858-886 from the human protein was used as the immunogen for this Retinoblastoma antibody.

Storage

Aliquot the Retinoblastoma antibody and store frozen at -20°C or colder. Avoid repeated freeze-thaw cycles.