

BDNF Antibody (F50934)

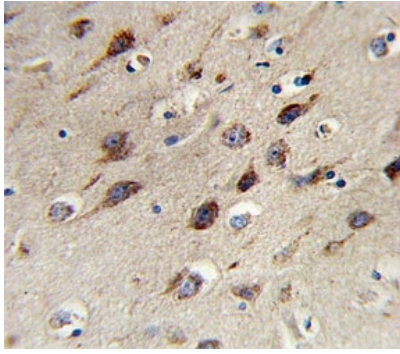
Catalog No.	Formulation	Size
F50934-0.4ML	In 1X PBS, pH 7.4, with 0.09% sodium azide	0.4 ml
F50934-0.08ML	In 1X PBS, pH 7.4, with 0.09% sodium azide	0.08 ml

[Bulk quote request](#)

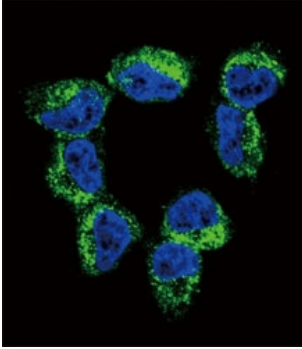
Availability	1-3 business days
Species Reactivity	Human
Predicted Reactivity	Mouse, Rat, Bovine, Pig
Format	Purified
Clonality	Polyclonal (rabbit origin)
Isotype	Rabbit Ig
Purity	Purified
UniProt	P23560
Applications	Western blot : 1:1000 IHC (Paraffin) : 1:10-1:50 Immunofluorescence : 1:10-1:50 Flow Cytometry : 1:10-1:50
Limitations	This BDNF antibody is available for research use only.



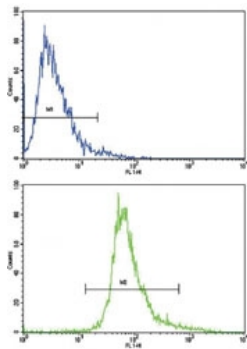
Western blot analysis of BDNF antibody and CEM lysate.



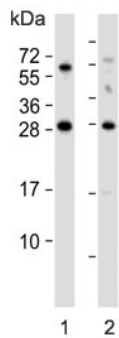
IHC analysis of FFPE human brain stained with BDNF antibody



Confocal immunofluorescent analysis of BDNF antibody with NCI-H460 cells followed by Alexa Fluor 488-conjugated goat anti-rabbit IgG (green). DAPI was used as a nuclear counterstain (blue).



Flow cytometric analysis of CEM cells using BDNF antibody (bottom histogram) compared to a negative control cell (top histogram). FITC-conjugated goat-anti-rabbit secondary Ab was used for the analysis.



Western blot testing of human 1) cerebellum and 2) U-87 MG lysate with BDNF antibody.

Description

BDNF is a member of the nerve growth factor family. It is induced by cortical neurons, and is necessary for survival of striatal neurons in the brain. Expression of this protein is reduced in both Alzheimer's and Huntington disease patients. This protein may play a role in the regulation of stress response and in the biology of mood disorders.

Application Notes

Titration of the BDNF antibody may be required due to differences in protocols and secondary/substrate sensitivity.

Immunogen

A portion of amino acids 206-236 from the human protein was used as the immunogen for this BDNF antibody.

Storage

Aliquot the BDNF antibody and store frozen at -20oC or colder. Avoid repeated freeze-thaw cycles.