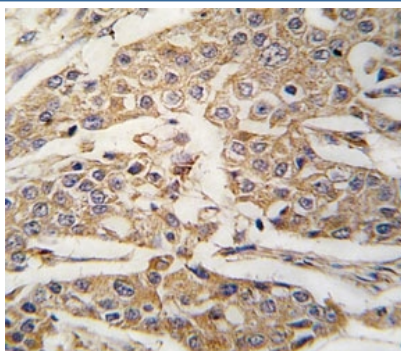


PKM2 Antibody (F50165)

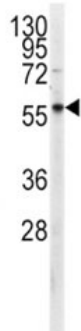
Catalog No.	Formulation	Size
F50165-0.4ML	In 1X PBS, pH 7.4, with 0.09% sodium azide	0.4 ml
F50165-0.08ML	In 1X PBS, pH 7.4, with 0.09% sodium azide	0.08 ml

[Bulk quote request](#)

Availability	1-3 business days
Species Reactivity	Human
Predicted Reactivity	Rabbit
Format	Purified
Clonality	Polyclonal (rabbit origin)
Isotype	Rabbit Ig
Purity	Purified
UniProt	P14618
Applications	Western blot : 1:1000 IHC (Paraffin) : 1:10-1:50
Limitations	This PKM2 antibody is available for research use only.



IHC analysis of FFPE human breast carcinoma tissue stained with PKM2 antibody



Western blot analysis of PKM2 antibody and CEM lysate. Predicted molecular weight ~58 kDa.

Description

PKM2 is a pyruvate kinase that catalyzes the production of phosphoenolpyruvate from pyruvate and ATP. This protein has been shown to interact with thyroid hormone, and thus may mediate cellular metabolic effects induced by thyroid hormones. This protein has been found to bind Opa protein, a bacterial outer membrane protein involved in gonococcal adherence to and invasion of human cells, suggesting a role of this protein in bacterial pathogenesis.

Application Notes

Titration of the PKM2 antibody may be required due to differences in protocols and secondary/substrate sensitivity.

Immunogen

A portion of amino acids 460-489 from the human protein was used as the immunogen for this PKM2 antibody.

Storage

Aliquot the PKM2 antibody and store frozen at -20°C or colder. Avoid repeated freeze-thaw cycles.