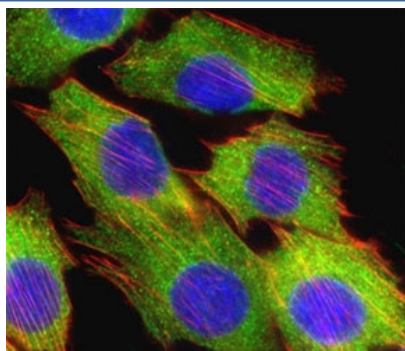


AKT2 Antibody (F50043)

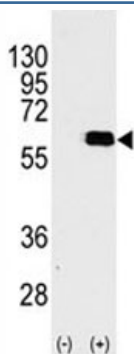
Catalog No.	Formulation	Size
F50043-0.4ML	In 1X PBS, pH 7.4, with 0.09% sodium azide	0.4 ml
F50043-0.08ML	In 1X PBS, pH 7.4, with 0.09% sodium azide	0.08 ml

[Bulk quote request](#)

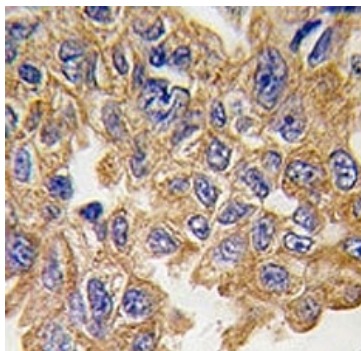
Availability	1-3 business days
Species Reactivity	Human
Predicted Reactivity	Mouse, Rat
Format	Antigen affinity purified
Clonality	Polyclonal (rabbit origin)
Isotype	Rabbit Ig
Purity	Antigen affinity
UniProt	P31751
Applications	Immunofluorescence : 1:10-1:50 Western blot : 1:1000 IHC (Paraffin) : 1:10-1:50
Limitations	This AKT2 antibody is available for research use only.



Fluorescent confocal image of C2C12 cell stained with AKT2 antibody at 1:25. Immunoreactivity is localized to the cytoplasm.



Western blot analysis of AKT2 antibody and 293 cell lysate (2 ug/lane) either nontransfected (Lane 1) or transiently transfected with the AKT2 gene (2). Predicted molecular weight: ~56kDa.



IHC analysis of FFPE human lung carcinoma tissue stained with AKT2 antibody

Description

AKT2 is a protein belonging to a subfamily of serine/threonine kinases containing SH2-like (Src homology 2-like) domains. AKT2 has been shown to be amplified and overexpressed in 2 of 8 ovarian carcinoma cell lines and 2 of 15 primary ovarian tumors. Overexpression of AKT2 contributes to the malignant phenotype of a subset of human ductal pancreatic cancers. AKT2 is a general protein kinase capable of phosphorylating several known proteins.

Application Notes

Titration of the AKT2 antibody may be required due to differences in protocols and secondary/substrate sensitivity.

Immunogen

A portion of amino acids 452-481 from the human protein was used as the immunogen for this AKT2 antibody.

Storage

Aliquot the AKT2 antibody and store frozen at -20oC or colder. Avoid repeated freeze-thaw cycles.