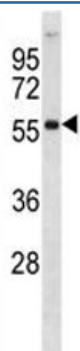


## AKT2 Antibody (F50042)

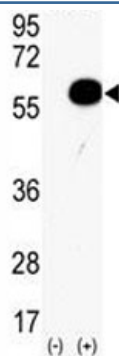
Catalog No.	Formulation	Size
F50042-0.4ML	In 1X PBS, pH 7.4, with 0.09% sodium azide	0.4 ml
F50042-0.08ML	In 1X PBS, pH 7.4, with 0.09% sodium azide	0.08 ml

[Bulk quote request](#)

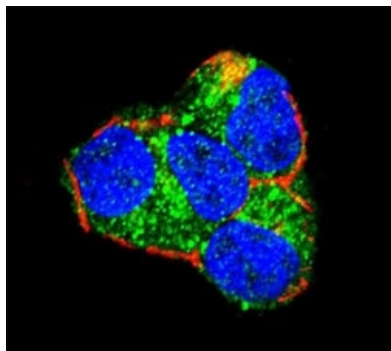
<b>Availability</b>	1-3 business days
<b>Species Reactivity</b>	Human
<b>Format</b>	Antigen affinity purified
<b>Clonality</b>	Polyclonal (rabbit origin)
<b>Isotype</b>	Rabbit Ig
<b>Purity</b>	Antigen affinity
<b>UniProt</b>	P31751
<b>Applications</b>	Western blot : 1:1000 Immunofluorescence : 1:10-1:50 Flow Cytometry : 1:10-1:50 IHC (Paraffin) : 1:10-1:50
<b>Limitations</b>	This AKT2 antibody is available for research use only.



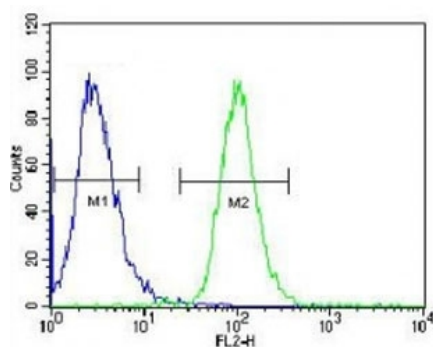
AKT2 antibody western blot analysis in 293 lysate. Predicted molecular weight: ~56kDa.



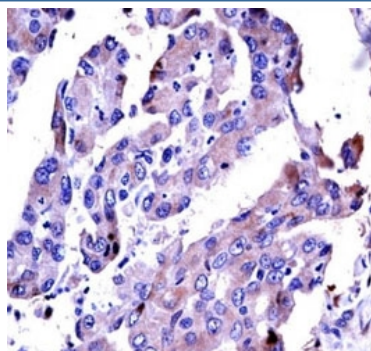
Western blot analysis of AKT2 antibody and 293 cell lysate (2 ug/lane) either nontransfected (Lane 1) or transiently transfected with the human gene (2). Predicted molecular weight: ~56kDa.



Confocal immunofluorescent analysis of AKT2 antibody with 293 cells followed by Alexa Fluor 488-conjugated goat anti-rabbit IgG (green). Actin filaments have been labeled with Alexa Fluor 555 Phalloidin (red). DAPI was used as a nuclear counterstain (blue).



AKT2 antibody flow cytometric analysis of HeLa cells (right histogram) compared to a negative control (left histogram). FITC-conjugated goat-anti-rabbit secondary Ab was used for the analysis.



AKT2 antibody immunohistochemistry analysis in formalin fixed and paraffin embedded human lung adenocarcinoma.

## Description

AKT2 is a putative oncogenic protein belonging to a subfamily of serine/threonine kinases containing SH2-like (Src homology 2-like) domains. Furthermore, AKT2 was shown to be amplified and overexpressed in 2 of 8 ovarian carcinoma cell lines and 2 of 15 primary ovarian tumors. Overexpression of AKT2 contributes to the malignant phenotype of a subset of human ductal pancreatic cancers. AKT2 is a general protein kinase capable of phosphorylating several known proteins.

## Application Notes

Titration of the AKT2 antibody may be required due to differences in protocols and secondary/substrate sensitivity.

## **Immunogen**

A portion of amino acids 93-123 from the human protein was used as the immunogen for this AKT2 antibody.

## **Storage**

Aliquot the AKT2 antibody and store frozen at -20oC or colder. Avoid repeated freeze-thaw cycles.