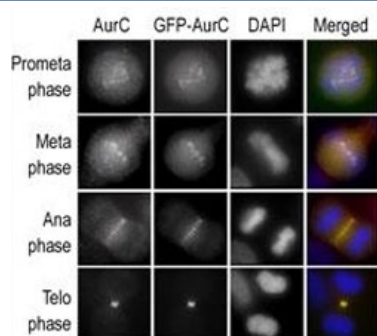


## Aurora-C Antibody (F50011)

Catalog No.	Formulation	Size
F50011-0.4ML	In 1X PBS, pH 7.4, with 0.09% sodium azide	0.4 ml
F50011-0.08ML	In 1X PBS, pH 7.4, with 0.09% sodium azide	0.08 ml

[Bulk quote request](#)

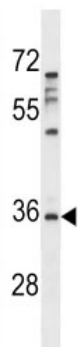
<b>Availability</b>	1-3 business days
<b>Species Reactivity</b>	Human
<b>Format</b>	Antigen affinity purified
<b>Clonality</b>	Polyclonal (rabbit origin)
<b>Isotype</b>	Rabbit Ig
<b>Purity</b>	Antigen affinity
<b>UniProt</b>	Q9UQB9
<b>Applications</b>	Western blot : 1:1000
<b>Limitations</b>	This Aurora-C antibody is available for research use only.



Immunofluorescence staining of HeLa cells expressing GFP-Aurora-C performed at different cellular mitotic stages with the A) Aurora-C antibody, B) GFP fluorescence, C) DAPI nuclear staining, and D) anti-Aurora C merged to DAPI staining.



Western blot testing of Aurora-C antibody and lysate of 293 cells expressing Flag tag (lane 1), Flag-tagged Aurora-A (2), -B (3), -C (4).



Aurora-C antibody western blot analysis in MDA-MB231 lysate. Predicted molecular weight ~33 kDa.

## Description

Chromosomal segregation during mitosis as well as meiosis is regulated by kinases and phosphatases. The Aurora kinases, members of the Ser/Thr protein kinase family, associate with microtubules during chromosome movement and segregation. Aurora kinase C may play a part in organizing microtubules in relation to the function of the centrosome/spindle pole during mitosis. This protein is localized to centrosome from anaphase to cytokinesis. Expression is limited to testis in normal cells. Elevated expression levels are seen only in a subset of cancer cells such as HepG2, HuH7 and HeLa cells. Aurora-C expression is maximum at M phase.

## Application Notes

Titration of the Aurora-C antibody may be required due to differences in protocols and secondary/substrate sensitivity.

## Immunogen

A portion of amino acids 3-38 from the human protein was used as the immunogen for this Aurora-C antibody.

## Storage

Aliquot the Aurora-C antibody and store frozen at -20°C or colder. Avoid repeated freeze-thaw cycles.