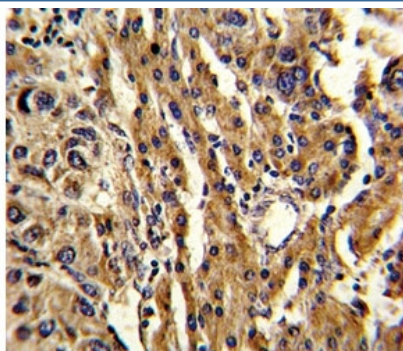


## ABCG1 Antibody (F49667)

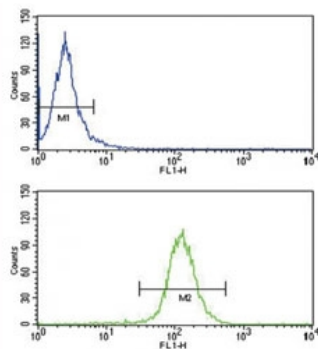
Catalog No.	Formulation	Size
F49667-0.4ML	In 1X PBS, pH 7.4, with 0.09% sodium azide	0.4 ml
F49667-0.08ML	In 1X PBS, pH 7.4, with 0.09% sodium azide	0.08 ml

[Bulk quote request](#)

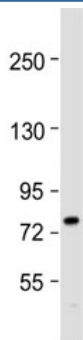
Availability	1-3 business days
Species Reactivity	Human
Format	Purified
Clonality	Polyclonal (rabbit origin)
Isotype	Rabbit Ig
Purity	Purified
UniProt	P45844
Localization	Cytoplasmic
Applications	Western blot : 1:500-1000 IHC (Paraffin) : 1:10-1:50 Flow Cytometry : 1:10-1:50
Limitations	This ABCG1 antibody is available for research use only.



IHC analysis of FFPE human hepatocarcinoma stained with ABCG1 antibody



ABCG1 antibody flow cytometry analysis of HepG2 cells (bottom histogram) compared to a negative control (top histogram). FITC-conjugated goat-anti-rabbit secondary Ab was used for the analysis.



Western blot analysis of ABCG1 antibody (1:1000) and human HepG2 cell lysate. Predicted molecular weight: 75~90 kDa.

## Description

ATP-binding cassette sub-family G member 1 is a transporter involved in macrophage lipid homeostasis. Is an active component of the macrophage lipid export complex. Could also be involved in intracellular lipid transport processes. The role in cellular lipid homeostasis may not be limited to macrophages.

## Application Notes

Titration of the ABCG1 antibody may be required due to differences in protocols and secondary/substrate sensitivity.

## Immunogen

A portion of amino acids 359-387 from the human protein was used as the immunogen for this ABCG1 antibody.

## Storage

Aliquot the ABCG1 antibody and store frozen at -20°C or colder. Avoid repeated freeze-thaw cycles.