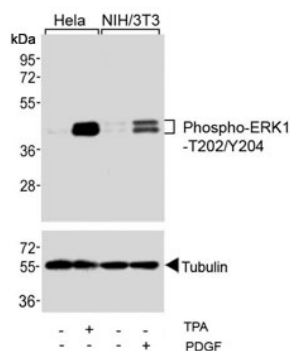


Phospho-ERK1/2 Antibody [p-ERK1/2] (T202/Y204) (F48590)

Catalog No.	Formulation	Size
F48590-0.4ML	In 1X PBS, pH 7.4, with 0.09% sodium azide	0.4 ml
F48590-0.08ML	In 1X PBS, pH 7.4, with 0.09% sodium azide	0.08 ml

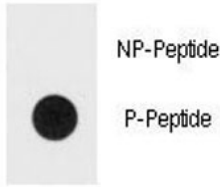
[Bulk quote request](#)

Availability	1-3 business days
Species Reactivity	Human, Mouse
Predicted Reactivity	Drosophila, Rat
Format	Antigen affinity purified
Clonality	Polyclonal (rabbit origin)
Isotype	Rabbit Ig
Purity	Antigen affinity
UniProt	P27361
Applications	Dot blot : 1:500 Western blot : 1:1000
Limitations	This phospho-ERK1/2 antibody is available for research use only.



Western blot testing of human HeLa and mouse NIH3T3 cells treated with TPA (200nM) and PDGF (100ng/ml) using phospho-ERK1/2 antibody.

Dot blot analysis of phospho-ERK1/2 antibody. 50ng of Bi-phos-peptide or nonphosphorylated peptide per dot were spotted.



Description

MAPK3/ERK1 is a member of the MAP kinase family. MAP kinases, also known as extracellular signal-regulated kinases (ERKs), act in a signaling cascade that regulates various cellular processes such as proliferation, differentiation, and cell cycle progression in response to a variety of extracellular signals. This kinase is activated by upstream kinases, resulting in its translocation to the nucleus where it phosphorylates nuclear targets.

Application Notes

Titration of the phospho-ERK1/2 antibody may be required due to differences in protocols and secondary/substrate sensitivity.

Immunogen

This phospho-ERK1/2 antibody was produced from rabbits immunized with a KLH conjugated synthetic phosphopeptide corresponding to amino acid residues surrounding pT202/pY204 of human ERK1/2.

Storage

Aliquot the phospho-ERK1/2 antibody and store frozen at -20oC or colder. Avoid repeated freeze-thaw cycles.