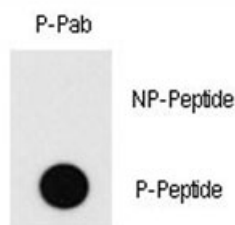


Phospho-MEF2C Antibody (pT20) (F48481)

Catalog No.	Formulation	Size
F48481-0.4ML	In 1X PBS, pH 7.4, with 0.09% sodium azide	0.4 ml
F48481-0.08ML	In 1X PBS, pH 7.4, with 0.09% sodium azide	0.08 ml

[Bulk quote request](#)

Availability	1-3 business days
Species Reactivity	Human
Predicted Reactivity	Bovine, Chicken, Mouse, Pig, Rat, Xenopus
Format	Antigen affinity purified
Clonality	Polyclonal (rabbit origin)
Isotype	Rabbit Ig
Purity	Antigen affinity
UniProt	Q06413
Applications	Dot blot : 1:500
Limitations	This phospho-MEF2C antibody is available for research use only.



Dot blot analysis of phospho-MEF2C antibody. 50ng of phos-peptide or nonphos-peptide per dot were spotted.

Description

MEF2C is a transcription activator which binds specifically to the MEF2 element present in the regulatory regions of many muscle-specific genes. This protein controls cardiac morphogenesis and myogenesis, and is also involved in vascular development. It may also be involved in neurogenesis and in the development of cortical architecture.

Application Notes

Titration of the phospho-MEF2C antibody may be required due to differences in protocols and secondary/substrate sensitivity.

Immunogen

This phospho-MEF2C antibody was produced from rabbits immunized with a KLH conjugated synthetic phosphopeptide corresponding to amino acid residues surrounding pT20 of human MEF2C.

Storage

Aliquot the phospho-MEF2C antibody and store frozen at -20oC or colder. Avoid repeated freeze-thaw cycles.