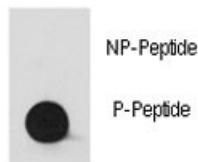


Phospho-Src Antibody (pY530) (F48453)

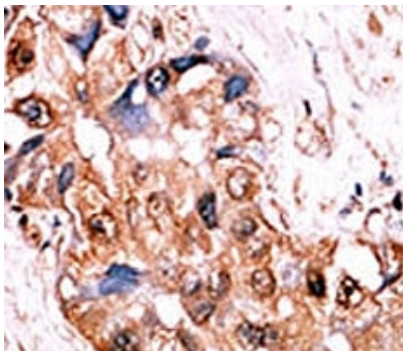
| Catalog No. | Formulation | Size |
|---------------|--------------------------------------------|---------|
| F48453-0.4ML | In 1X PBS, pH 7.4, with 0.09% sodium azide | 0.4 ml |
| F48453-0.08ML | In 1X PBS, pH 7.4, with 0.09% sodium azide | 0.08 ml |

[Bulk quote request](#)

| | |
|-----------------------------|---------------------------------------------------------------|
| Availability | 1-3 business days |
| Species Reactivity | Human |
| Predicted Reactivity | Chicken, Mouse, Rat, Zebrafish |
| Format | Antigen affinity purified |
| Clonality | Polyclonal (rabbit origin) |
| Isotype | Rabbit Ig |
| Purity | Antigen affinity |
| UniProt | P12931 |
| Applications | Dot blot : 1:500 IHC (Paraffin) : 1:50-1:100 |
| Limitations | This phospho-Src antibody is available for research use only. |



Dot blot analysis of phospho-Src antibody. 50ng of phos-peptide or nonphos-peptide per dot were spotted.



IHC analysis of FFPE human hepatocarcinoma tissue stained with the phospho-Src antibody.

Description

This protein has tyrosine kinase activity and belongs to the src family of proteins.

Application Notes

Titration of the phospho-Src antibody may be required due to differences in protocols and secondary/substrate sensitivity.

Immunogen

This phospho-Src antibody was produced from rabbits immunized with a KLH conjugated synthetic phosphopeptide corresponding to amino acid residues surrounding pY530 of human Src.

Storage

Aliquot the phospho-Src antibody and store frozen at -20°C or colder. Avoid repeated freeze-thaw cycles.