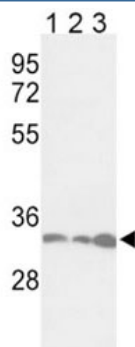


Anti-PCNA Antibody (F48250)

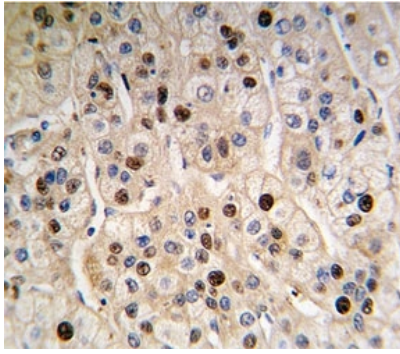
Catalog No.	Formulation	Size
F48250-0.4ML	In 1X PBS, pH 7.4, with 0.09% sodium azide	0.4 ml
F48250-0.08ML	In 1X PBS, pH 7.4, with 0.09% sodium azide	0.08 ml

[Bulk quote request](#)

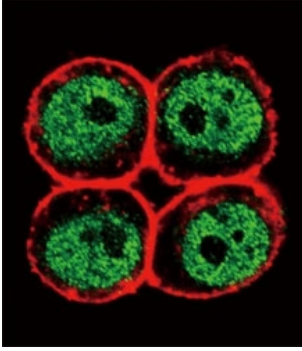
Availability	1-3 business days
Species Reactivity	Human
Predicted Reactivity	Mouse, Rat, Bovine, Primate, Chicken, Hamster
Format	Purified
Clonality	Polyclonal (rabbit origin)
Isotype	Rabbit Ig
Purity	Purified
UniProt	P12004
Applications	Western blot : 1:1000 IHC (Paraffin) : 1:10-1:50 Immunofluorescence : 1:10-1:50 Flow Cytometry : 1:10-1:50
Limitations	This anti-PCNA antibody is available for research use only.



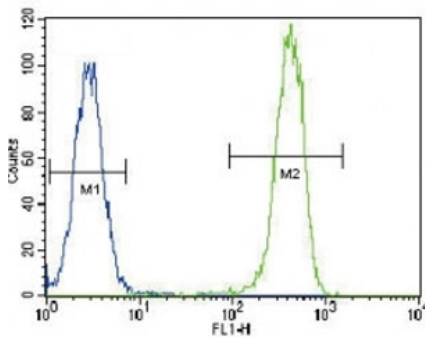
Western blot analysis of anti-PCNA antibody and 1) Jurkat, 2) HeLa, and 3) 293 lysate. Predicted molecular weight ~29kDa, routinely observed at 29~36kDa.



IHC analysis of FFPE human hepatocarcinoma tissue stained with anti-PCNA antibody



Confocal immunofluorescent analysis of anti-PCNA antibody with HeLa cells followed by Alexa Fluor 488-conjugated goat anti-rabbit IgG (green). Actin filaments have been labeled with Alexa Fluor 555 Phalloidin (red).



Anti-PCNA antibody flow cytometric analysis of HeLa cells (right histogram) compared to a negative control cell (left histogram). FITC-conjugated goat-anti-rabbit secondary Ab was used for the analysis.

Description

PCNA is found in the nucleus and is a cofactor of DNA polymerase delta. This protein acts as a homotrimer and helps increase the processivity of leading strand synthesis during DNA replication. In response to DNA damage, this protein is ubiquitinated and is involved in the RAD6-dependent DNA repair pathway.

Application Notes

Titration of the anti-PCNA antibody may be required due to differences in protocols and secondary/substrate sensitivity.

Immunogen

A portion of amino acids 89-117 from the human protein was used as the immunogen for this anti-PCNA antibody.

Storage

Aliquot the anti-PCNA antibody and store frozen at -20°C or colder. Avoid repeated freeze-thaw cycles.

