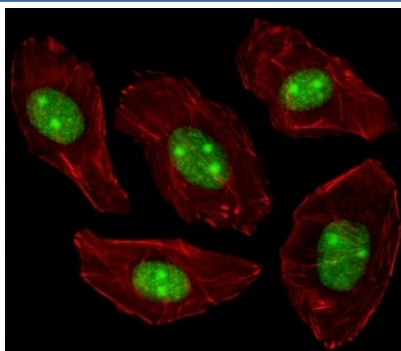


NPM1 Antibody (F48248)

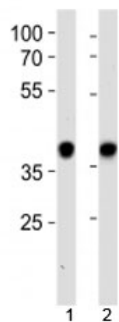
Catalog No.	Formulation	Size
F48248-0.4ML	In 1X PBS, pH 7.4, with 0.09% sodium azide	0.4 ml
F48248-0.08ML	In 1X PBS, pH 7.4, with 0.09% sodium azide	0.08 ml

[Bulk quote request](#)

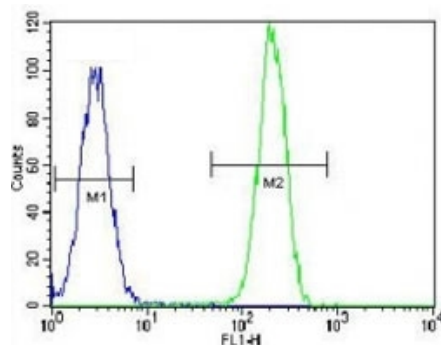
Availability	1-3 business days
Species Reactivity	Human
Format	Purified
Clonality	Polyclonal (rabbit origin)
Isotype	Rabbit Ig
Purity	Purified
UniProt	P06748
Applications	Immunofluorescence : 1:10-1:50 Western blot : 1:1000 Flow Cytometry : 1:10-1:50 IHC (Paraffin) : 1:10-1:50
Limitations	This NPM1 antibody is available for research use only.



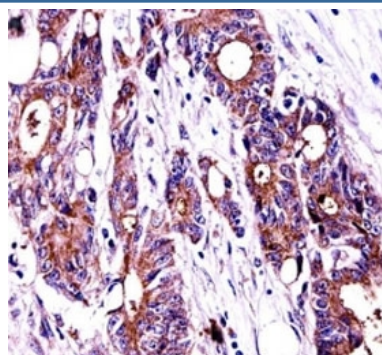
Fluorescent image of A549 cells stained with NPM1 antibody. Alexa Fluor 488 conjugated secondary was used (green). NPM1 immunoreactivity is localized to the nucleus and nucleolus significantly.



NPM1 antibody western blot analysis in 1) HeLa and 2) Jurkat lysate. Expected/observed molecular weight: ~38kDa.



NPM1 antibody flow cytometric analysis of HeLa cells (green) compared to a [negative control](#) (blue). FITC-conjugated goat-anti-rabbit secondary Ab was used for the analysis.



NPM1 antibody immunohistochemistry analysis in formalin fixed and paraffin embedded human colon carcinoma.

Description

Nucleophosmin/NPM1 is a ubiquitously expressed nucleolar protein that shuttles between the nucleus and cytoplasm. It is implicated in multiple functions, including ribosomal protein assembly and transport, control of centrosome duplication, and regulation of the tumor suppressor ARF. NPM1 mutations that relocalize NPM1 from the nucleus into the cytoplasm are associated with development of acute myeloid leukemia.

Application Notes

Titration of the NPM1 antibody may be required due to differences in protocols and secondary/substrate sensitivity.

Immunogen

A portion of amino acids 198-226 from the human protein was used as the immunogen for this NPM1 antibody.

Storage

Aliquot the NPM1 antibody and store frozen at -20°C or colder. Avoid repeated freeze-thaw cycles.

