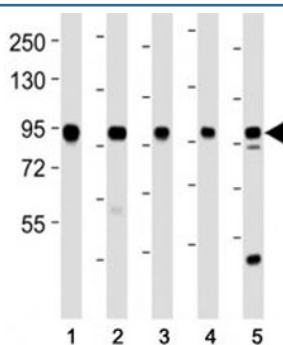


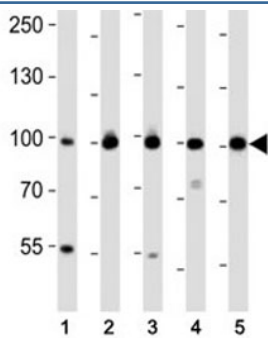
EZH2 Antibody (F48073)

Catalog No.	Formulation	Size
F48073-0.4ML	In 1X PBS, pH 7.4, with 0.09% sodium azide	0.4 ml
F48073-0.08ML	In 1X PBS, pH 7.4, with 0.09% sodium azide	0.08 ml

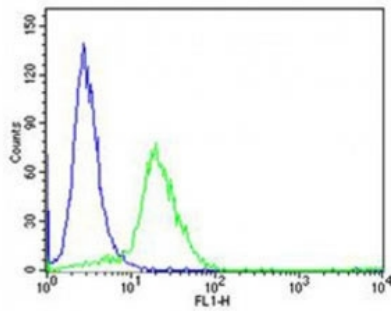
[Bulk quote request](#)

Availability	1-3 business days
Species Reactivity	Human, Mouse
Format	Antigen affinity purified
Clonality	Polyclonal (rabbit origin)
Isotype	Rabbit Ig
Purity	Antigen affinity
UniProt	Q15910
Localization	Nuclear
Applications	Flow Cytometry : 1:25 Western blot : 1:1000 IHC (FFPE) : 1:10-1:50 IF/ICC : 1:25
Limitations	This EZH2 antibody is available for research use only.

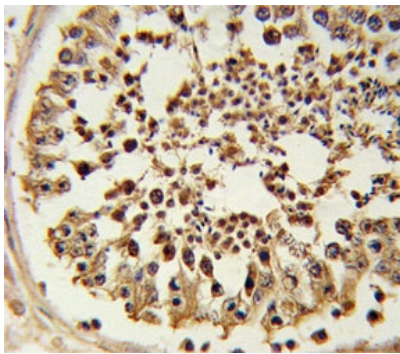




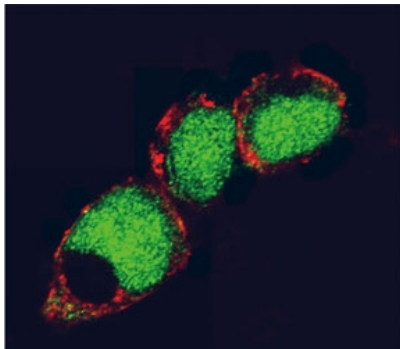
Western blot analysis of lysate from (1) MDA-MB-468, (2) SW620, (3) T47D cell line, (4) mouse spleen, (5) mouse testis tissue using EZH2 antibody at 1:1000. Predicted molecular weight: 85-95 kDa.



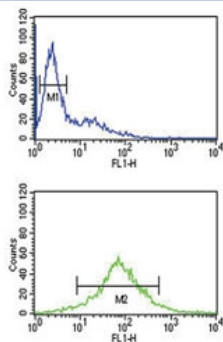
Flow cytometric analysis of HeLa cells using EZH2 antibody (green) compared to an [isotype control of rabbit IgG](#) (blue). Ab was diluted at 1:25 dilution. An Alexa Fluor 488 goat anti-rabbit IgG was used as the secondary Ab.



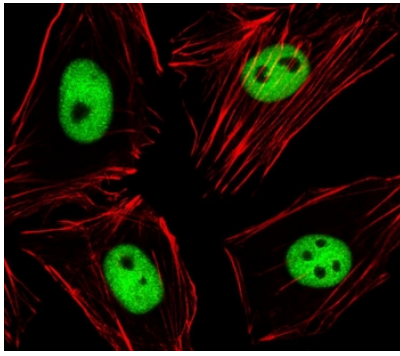
Formalin-fixed and paraffin-embedded human testis tissue tested with EZH2 antibody



Confocal immunofluorescent analysis of EZH2 antibody and human HEK293 cells followed by Alexa Fluor 488-conjugated goat anti-rabbit IgG (green). Actin filaments have been labeled with Alexa Fluor 555 phalloidin (red).



EZH2 antibody flow cytometric analysis of Jurkat cells (bottom histogram) compared to negative control cells (top histogram).



Confocal immunofluorescent analysis of EZH2 antibody and human HeLa cells followed by Alexa Fluor 488-conjugated goat anti-rabbit IgG (green). Actin filaments have been labeled with Alexa Fluor 555 phalloidin (red).

Description

EZH2 is a protein that transfers sulfate to the C-4 hydroxyl of beta-1,4-linked GalNAc flanked by GlcUA residues in chondroitin.

Application Notes

Titration of the EZH2 antibody may be required due to differences in protocols and secondary/substrate sensitivity.

Immunogen

This EZH2 antibody was produced from rabbits immunized with a recombinant protein from human EZH2.

Storage

Aliquot the EZH2 antibody and store frozen at -20oC or colder. Avoid repeated freeze-thaw cycles.