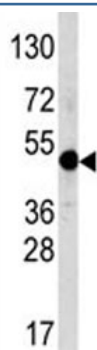


AP2 alpha Antibody (TFAP2A) (F47550)

Catalog No.	Formulation	Size
F47550-0.4ML	In 1X PBS, pH 7.4, with 0.09% sodium azide	0.4 ml
F47550-0.08ML	In 1X PBS, pH 7.4, with 0.09% sodium azide	0.08 ml

[Bulk quote request](#)

Availability	1-3 business days
Species Reactivity	Human
Predicted Reactivity	Bovine
Format	Purified
Clonality	Polyclonal (rabbit origin)
Isotype	Rabbit Ig
Purity	Purified
UniProt	P05549
Applications	Western blot : 1:1000
Limitations	This AP2 alpha antibody is available for research use only.



Western blot analysis of AP2 antibody and NCI-H460 lysate. Predicted molecular weight ~47 kDa.

Description

Activator protein 2 alpha is expressed in neural crest cell lineages with the highest levels of expression corresponding to early neural crest cells, suggesting that TFAP2A plays a role in their differentiation and development. TFAP2A is expressed in ectoderm and in neural-crest cells migrating from the cranial folds during closure of the neural tube in the mouse. Cranial

neural crest cell provides patterning information for craniofacial morphogenesis and generate most of the skull bones and the cranial ganglia.

Application Notes

Titration of the AP2 alpha antibody may be required due to differences in protocols and secondary/substrate sensitivity.

Immunogen

A portion of amino acids 407-436 from the human protein was used as the immunogen for this AP2 alpha antibody.

Storage

Aliquot the AP2 alpha antibody and store frozen at -20oC or colder. Avoid repeated freeze-thaw cycles.