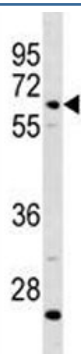


## C8B Antibody / Complement C8B (F47544)

Catalog No.	Formulation	Size
F47544-0.4ML	In 1X PBS, pH 7.4, with 0.09% sodium azide	0.4 ml
F47544-0.08ML	In 1X PBS, pH 7.4, with 0.09% sodium azide	0.08 ml

[Bulk quote request](#)

<b>Availability</b>	1-3 business days
<b>Species Reactivity</b>	Human
<b>Format</b>	Antigen affinity purified
<b>Clonality</b>	Polyclonal (rabbit origin)
<b>Isotype</b>	Rabbit Ig
<b>Purity</b>	Antigen affinity
<b>UniProt</b>	P07358
<b>Applications</b>	Western blot : 1:1000
<b>Limitations</b>	This C8B antibody is available for research use only.



C8B antibody western blot analysis in CEM lysate

## Description

C8 beta is one of the three subunits that comprise the component 8 (C8) of the complement system. C8 participates in the formation of Membrane Attack Complex that results in the lysis of cells. Patients with C8B deficiency are prone to bacteria infection.

## Application Notes

Titration of the C8B antibody may be required due to differences in protocols and secondary/substrate sensitivity.

## Immunogen

A portion of amino acids 393-422 from the human protein was used as the immunogen for this C8B antibody.

## Storage

Aliquot the C8B antibody and store frozen at -20oC or colder. Avoid repeated freeze-thaw cycles.