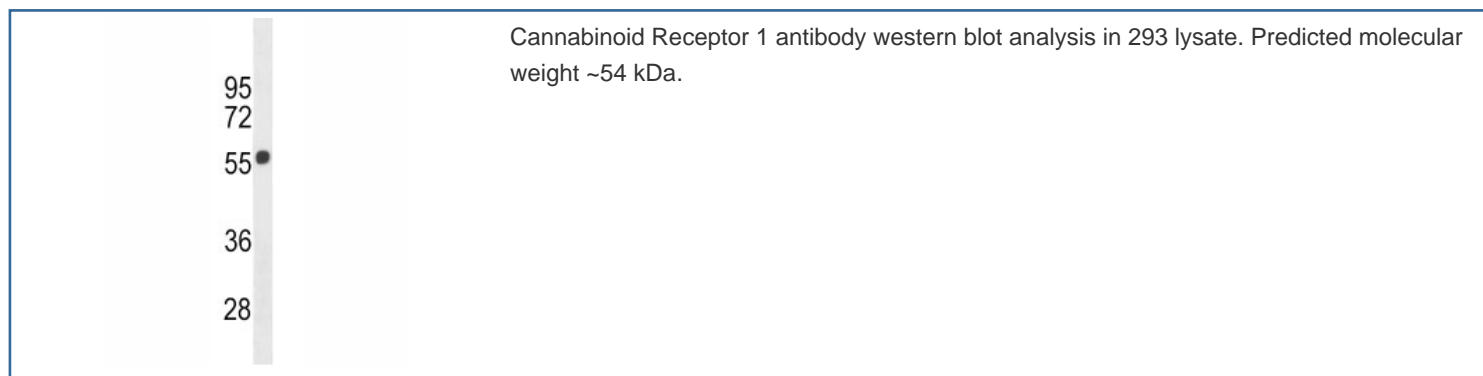


Cannabinoid Receptor 1 Antibody (F47457)

Catalog No.	Formulation	Size
F47457-0.4ML	In 1X PBS, pH 7.4, with 0.09% sodium azide	0.4 ml
F47457-0.08ML	In 1X PBS, pH 7.4, with 0.09% sodium azide	0.08 ml

[Bulk quote request](#)

Availability	1-3 business days
Species Reactivity	Human
Format	Antigen affinity purified
Clonality	Polyclonal (rabbit origin)
Isotype	Rabbit Ig
Purity	Antigen affinity
UniProt	P21554
Applications	Western blot : 1:1000
Limitations	This Cannabinoid Receptor 1 antibody is available for research use only.



Description

This gene encodes one of two cannabinoid receptors. The cannabinoids, principally delta-9-tetrahydrocannabinol and synthetic analogs, are psychoactive ingredients of marijuana. The cannabinoid receptors are members of the guanine-nucleotide-binding protein (G-protein) coupled receptor family, which inhibit adenylate cyclase activity in a dose-dependent, stereoselective and pertussis toxin-sensitive manner. The two receptors have been found to be involved in the cannabinoid-induced CNS effects (including alterations in mood and cognition) experienced by users of marijuana. Multiple transcript

variants encoding two different protein isoforms have been described for this gene. [provided by RefSeq].

Application Notes

Titration of the Cannabinoid Receptor 1 antibody may be required due to differences in protocols and secondary/substrate sensitivity.

Immunogen

A portion of amino acids 161-187 from the human protein was used as the immunogen for this Cannabinoid Receptor 1 antibody.

Storage

Aliquot the Cannabinoid Receptor 1 antibody and store frozen at -20oC or colder. Avoid repeated freeze-thaw cycles.