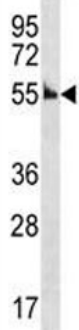


## Cyclin A Antibody (Ccna1) (F47273)

Catalog No.	Formulation	Size
F47273-0.4ML	In 1X PBS, pH 7.4, with 0.09% sodium azide	0.4 ml
F47273-0.08ML	In 1X PBS, pH 7.4, with 0.09% sodium azide	0.08 ml

[Bulk quote request](#)

Availability	1-3 business days
Species Reactivity	Mouse
Predicted Reactivity	Rat
Format	Antigen affinity purified
Clonality	Polyclonal (rabbit origin)
Isotype	Rabbit Ig
Purity	Antigen affinity
UniProt	Q61456
Applications	Western blot : 1:1000
Limitations	This Cyclin A antibody is available for research use only.



Cyclin A antibody western blot analysis in mouse kidney tissue lysate. Predicted molecular weight: 50-55 kDa

## Description

Ccna1 may be involved in the control of the cell cycle at the G1/S (start) and G2/M (mitosis) transitions. May primarily function in the control of the germline meiotic cell cycle and additionally in the control of mitotic cell cycle in some somatic cells.

## Application Notes

Titration of the Cyclin A antibody may be required due to differences in protocols and secondary/substrate sensitivity.

## Immunogen

A portion of amino acids 162-188 from the mouse protein was used as the immunogen for this Cyclin A antibody.

## Storage

Aliquot the Cyclin A antibody and store frozen at -20oC or colder. Avoid repeated freeze-thaw cycles.