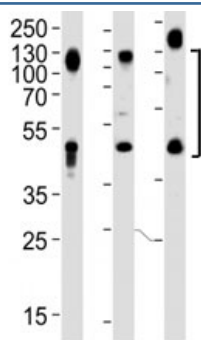


## LAMP1 Antibody / CD107A (F46325)

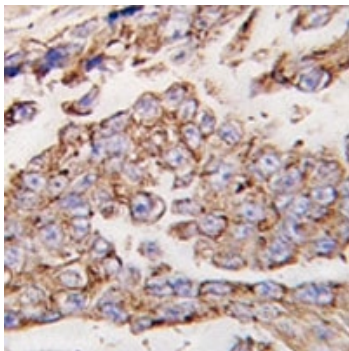
Catalog No.	Formulation	Size
F46325-0.4ML	In 1X PBS, pH 7.4, with 0.09% sodium azide	0.4 ml
F46325-0.08ML	In 1X PBS, pH 7.4, with 0.09% sodium azide	0.08 ml

[Bulk quote request](#)

<b>Availability</b>	1-3 business days
<b>Species Reactivity</b>	Human, Mouse
<b>Format</b>	Antigen affinity purified
<b>Clonality</b>	Polyclonal (rabbit origin)
<b>Isotype</b>	Rabbit Ig
<b>Purity</b>	Antigen affinity
<b>UniProt</b>	P11279
<b>Applications</b>	Western blot : 1:1000 IHC (Paraffin) : 1:10-1:50
<b>Limitations</b>	This LAMP1 antibody is available for research use only.



Western blot analysis of lysate from HeLa, HT1080 and human placenta lysate (left to right), using LAMP1 antibody at 1:1000. This heavily glycosylated protein of 417 amino acids is visualized at up to ~140 kDa.



IHC analysis of FFPE human lung carcinoma tissue stained with LAMP1 antibody.

## Description

The LAMP1 glycoprotein is a type I transmembrane protein which is expressed at high or medium levels in at least 76 different normal tissue cell types. It resides primarily across lysosomal membranes, and functions to provide selectins with carbohydrate ligands. It has also been shown to be a marker of degranulation on lymphocytes such as CD8+ and NK cells and may also play a role in tumor cell differentiation and metastasis. [Wiki]

## Application Notes

Titration of the LAMP1 antibody may be required due to differences in protocols and secondary/substrate sensitivity.

## Immunogen

A portion of amino acids 125-154 from the human protein was used as the immunogen for this LAMP1 antibody.

## Storage

Aliquot the LAMP1 antibody and store frozen at -20oC or colder. Avoid repeated freeze-thaw cycles.