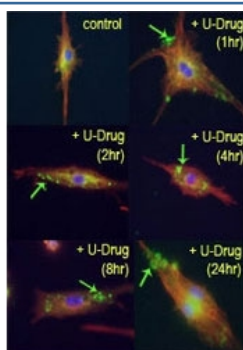


LC3B Antibody / MAP1LC3B (F46149)

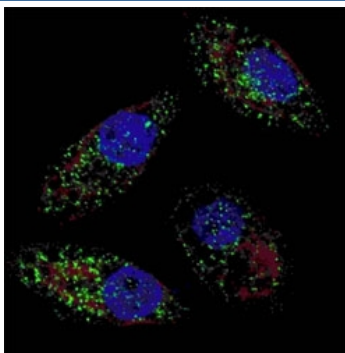
Catalog No.	Formulation	Size
F46149-0.4ML	In 1X PBS, pH 7.4, with 0.09% sodium azide	0.4 ml
F46149-0.08ML	In 1X PBS, pH 7.4, with 0.09% sodium azide	0.08 ml

[Bulk quote request](#)

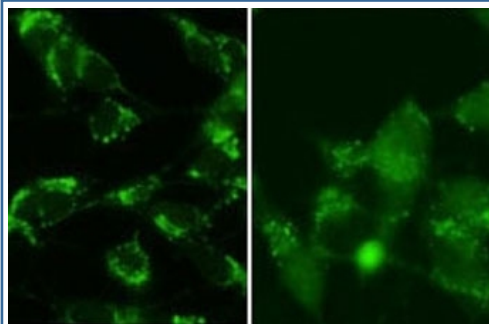
Availability	1-3 business days
Species Reactivity	Human, Mouse
Predicted Reactivity	Bovine
Format	Antigen affinity purified
Clonality	Polyclonal (rabbit origin)
Isotype	Rabbit Ig
Purity	Antigen affinity
UniProt	Q9GZQ8
Applications	Immunofluorescence : 1:10-1:100 Immunocytochemistry : 1:10-1:50
Limitations	This LC3B antibody is available for research use only.



Mouse leukaemic monocyte macrophage cells treated with drug U18666A, causing cholesterol and lipid storage in cells, blocking fusion between late endosomes and lysosomes. LC3B antibody detected punctuate staining indicative of autophagic vacuole or phagosome structures.



Fluorescent image of U251 cells stained with LC3B antibody at 1:100. Immunoreactivity is localized to autophagic vacuoles in the cytoplasm.



SY5Y cells were pretreated with 5nM bafilomycin for 24hr and fixed in methanol (left panel) or 4% of paraformaldehyde (right panel). Testing with LC3B antibody at dilution 1:100. Data courtesy of Jianhui Zhu, MD, PhD & Charleen T. Chu, MD, PhD, University of Pittsburgh School of Medicine.

Description

MAP1A and MAP1B each consist of a heavy chain subunit and multiple light chain subunits. MAP1LC3B is one of the light chain subunits and can associate with either MAP1A or MAP1B. It is a Ubiquitin-like modifier involved in formation of autophagosomal vacuoles (autophagosomes). LC3B plays a role in mitophagy which contributes to regulate mitochondrial quantity and quality by eliminating the mitochondria to a basal level to fulfill cellular energy requirements and preventing excess ROS production.

Application Notes

Titration of the LC3B antibody may be required due to differences in protocols and secondary/substrate sensitivity.

Immunogen

A portion of amino acids 89-122 from the human protein was used as the immunogen for this LC3B antibody.

Storage

Aliquot the LC3B antibody and store frozen at -20oC or colder. Avoid repeated freeze-thaw cycles.