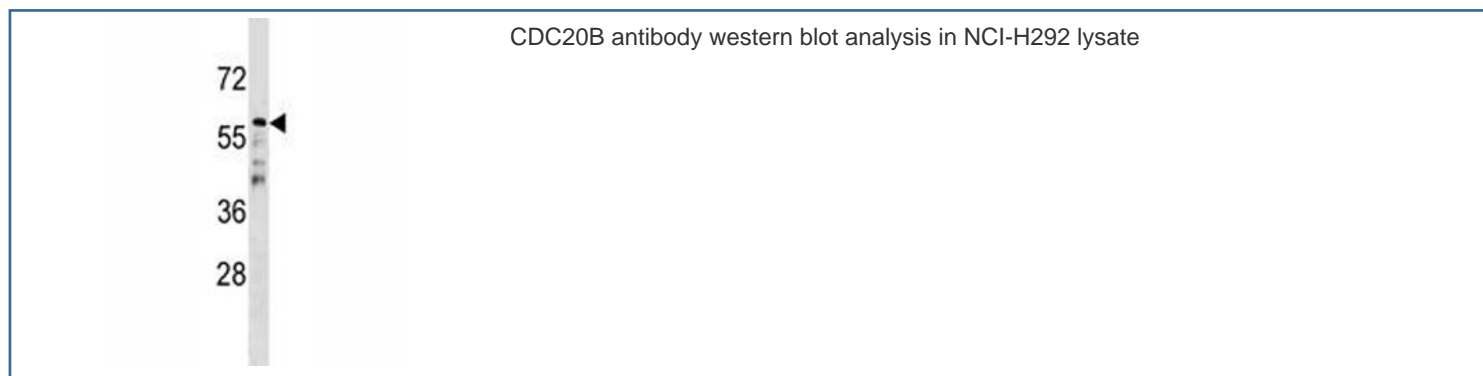


CDC20B Antibody (F45698)

Catalog No.	Formulation	Size
F45698-0.4ML	In 1X PBS, pH 7.4, with 0.09% sodium azide	0.4 ml
F45698-0.08ML	In 1X PBS, pH 7.4, with 0.09% sodium azide	0.08 ml

[Bulk quote request](#)

Availability	1-3 business days
Species Reactivity	Human
Format	Antigen affinity purified
Clonality	Polyclonal (rabbit origin)
Isotype	Rabbit Ig
Purity	Antigen affinity
UniProt	Q86Y33
Applications	Western blot : 1:1000
Limitations	This CDC20B antibody is available for research use only.



Description

The timely destruction of key regulators through ubiquitin-mediated proteolysis ensures the orderly progression of the cell cycle. The APC (anaphase-promoting complex) is a major component of this degradation machinery and its activation is required for the execution of critical events. CDC20B has been implicated as a meiosis specific activator of APC and is required for sporulation in budding yeast.

Application Notes

Titration of the CDC20B antibody may be required due to differences in protocols and secondary/substrate sensitivity.

Immunogen

A portion of amino acids 11-39 from the human protein was used as the immunogen for this CDC20B antibody.

Storage

Aliquot the CDC20B antibody and store frozen at -20oC or colder. Avoid repeated freeze-thaw cycles.