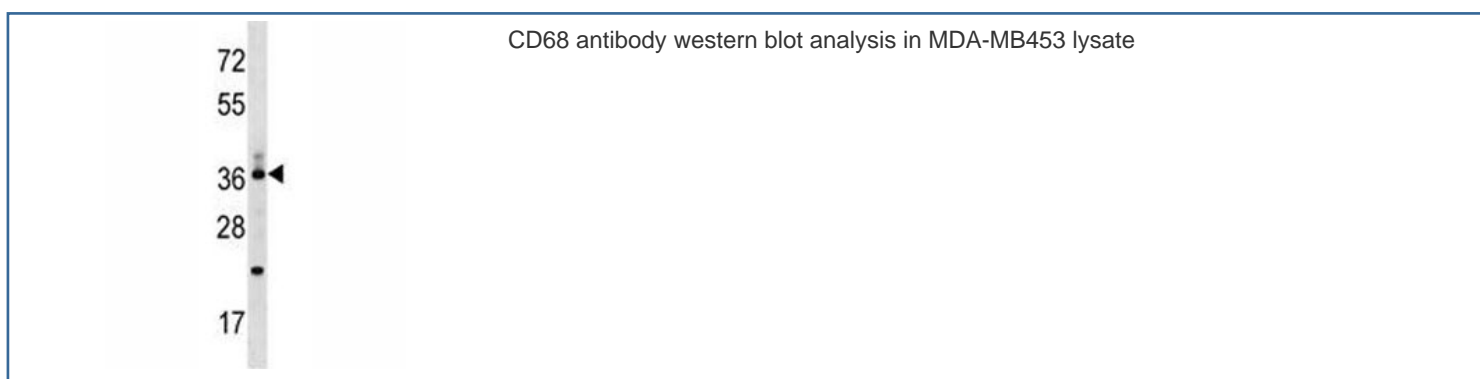


## CD68 Antibody (F45597)

Catalog No.	Formulation	Size
F45597-0.4ML	In 1X PBS, pH 7.4, with 0.09% sodium azide	0.4 ml
F45597-0.08ML	In 1X PBS, pH 7.4, with 0.09% sodium azide	0.08 ml

[Bulk quote request](#)

<b>Availability</b>	1-3 business days
<b>Species Reactivity</b>	Human
<b>Format</b>	Antigen affinity purified
<b>Clonality</b>	Polyclonal (rabbit origin)
<b>Isotype</b>	Rabbit Ig
<b>Purity</b>	Antigen affinity
<b>UniProt</b>	P34810
<b>Applications</b>	Western blot : 1:1000
<b>Limitations</b>	This CD68 antibody is available for research use only.



## Description

This gene encodes a 40~110-kD transmembrane glycoprotein that is highly expressed by human monocytes and tissue macrophages. It is a member of the lysosomal/endosomal-associated membrane glycoprotein (LAMP) family. The protein primarily localizes to lysosomes and endosomes with a smaller fraction circulating to the cell surface. It is a type I integral membrane protein with a heavily glycosylated extracellular domain and binds to tissue- and organ-specific lectins or selectins. The protein is also a member of the scavenger receptor family. Scavenger receptors typically function to clear cellular debris,

promote phagocytosis, and mediate the recruitment and activation of macrophages. Alternative splicing results in multiple transcripts encoding different isoforms.

## **Application Notes**

Titration of the CD68 antibody may be required due to differences in protocols and secondary/substrate sensitivity.

## **Immunogen**

A portion of amino acids 209-237 from the human protein was used as the immunogen for this CD68 antibody.

## **Storage**

Aliquot the CD68 antibody and store frozen at -20oC or colder. Avoid repeated freeze-thaw cycles.