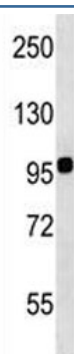


## Integrin beta 7 Antibody (F44498)

Catalog No.	Formulation	Size
F44498-0.4ML	In 1X PBS, pH 7.4, with 0.09% sodium azide	0.4 ml
F44498-0.08ML	In 1X PBS, pH 7.4, with 0.09% sodium azide	0.08 ml

[Bulk quote request](#)

<b>Availability</b>	1-3 business days
<b>Species Reactivity</b>	Human
<b>Format</b>	Antigen affinity purified
<b>Clonality</b>	Polyclonal (rabbit origin)
<b>Isotype</b>	Rabbit Ig
<b>Purity</b>	Antigen affinity
<b>UniProt</b>	P26010
<b>Applications</b>	Western blot : 1:1000
<b>Limitations</b>	This Integrin beta 7 antibody is available for research use only.



Integrin beta 7 antibody western blot analysis in WiDr lysate.

## Description

Integrin alpha-4/beta-7 (Peyer patches-specific homing receptor LPAM-1) is an adhesion molecule that mediates lymphocyte migration and homing to gut-associated lymphoid tissue (GALT). Integrin alpha-4/beta-7 interacts with the cell surface adhesion molecules MADCAM1 which is normally expressed by the vascular endothelium of the gastrointestinal tract. Interacts also with VCAM1 and fibronectin, an extracellular matrix component. It recognizes one or more domains within the alternatively spliced CS-1 region of fibronectin. Interactions involves the tripeptide L-D-T in MADCAM1, and L-D-V in

fibronectin. Binds to HIV-1 gp120, thereby allowing the virus to enter GALT, which is thought to be the major trigger of AIDS disease. Interaction would involve a tripeptide L-D-I in HIV-1 gp120. Integrin alpha-E/beta-7 (HML-1) is a receptor for E-cadherin.

## Application Notes

Titration of the Integrin beta 7 antibody may be required due to differences in protocols and secondary/substrate sensitivity.

## Immunogen

A portion of amino acids 737-765 from the human protein was used as the immunogen for this Integrin beta 7 antibody.

## Storage

Aliquot the Integrin beta 7 antibody and store frozen at -20oC or colder. Avoid repeated freeze-thaw cycles.