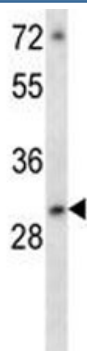


## ATF5 Antibody (F44355)

Catalog No.	Formulation	Size
F44355-0.4ML	In 1X PBS, pH 7.4, with 0.09% sodium azide	0.4 ml
F44355-0.08ML	In 1X PBS, pH 7.4, with 0.09% sodium azide	0.08 ml

[Bulk quote request](#)

<b>Availability</b>	1-3 business days
<b>Species Reactivity</b>	Human
<b>Format</b>	Antigen affinity purified
<b>Clonality</b>	Polyclonal (rabbit origin)
<b>Isotype</b>	Rabbit Ig
<b>Purity</b>	Antigen affinity
<b>UniProt</b>	Q9Y2D1
<b>Applications</b>	Western blot : 1:1000
<b>Limitations</b>	This ATF5 antibody is available for research use only.



ATF5 antibody western blot analysis in MCF-7 lysate. Predicted molecular weight: ~31kDa.

## Description

Transcriptional activator which binds the cAMP response element (CRE) (consensus: 5'-GTGACGT[AC][AG]-3'), a sequence present in many viral and cellular promoters and blocks the differentiation of neuroprogenitor cells into neurons. Its transcriptional activity is enhanced by CCND3 and slightly inhibited by CDK4.

## Application Notes

Titration of the ATF5 antibody may be required due to differences in protocols and secondary/substrate sensitivity.

## Immunogen

A portion of amino acids 188-216 from the human protein was used as the immunogen for this ATF5 antibody.

## Storage

Aliquot the ATF5 antibody and store frozen at -20oC or colder. Avoid repeated freeze-thaw cycles.