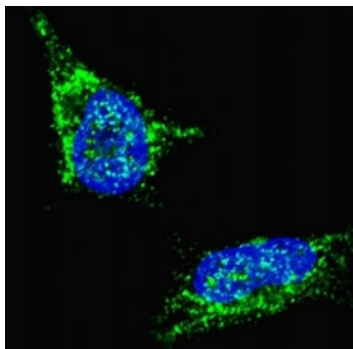


LIN28B Antibody (F44235)

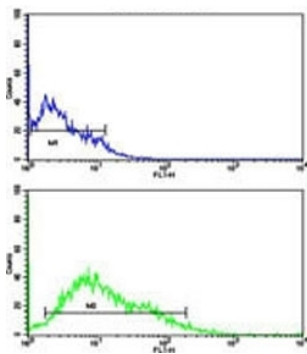
Catalog No.	Formulation	Size
F44235-0.4ML	In 1X PBS, pH 7.4, with 0.09% sodium azide	0.4 ml
F44235-0.08ML	In 1X PBS, pH 7.4, with 0.09% sodium azide	0.08 ml

[Bulk quote request](#)

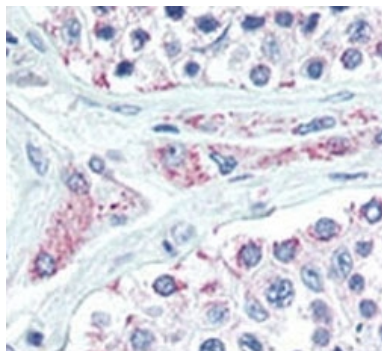
Availability	1-3 business days
Species Reactivity	Human
Format	Purified
Clonality	Polyclonal (rabbit origin)
Isotype	Rabbit Ig
Purity	Purified
UniProt	Q6ZN17
Applications	Immunofluorescence : 1:100 Western blot : 1:1000 IHC (Paraffin) : 1:10-1:50 Flow Cytometry : 1:10-1:50
Limitations	This LIN28B antibody is available for research use only.



Fluorescent confocal image of SY5Y cells stained with LIN28B antibody. Alexa Fluor 488 conjugated secondary (green) was used (1:1000, 1h). Nuclei were counterstained with Hoechst 33342 (blue) (10 ug/ml, 5 min). LIN28B immunosignal is localized predominantly to the cytoplasm.



Flow cytometric analysis of HL-60 cells using LIN28B antibody (green) compared to a [negative control](#) (blue). FITC-conjugated goat-anti-rabbit secondary Ab was used for the analysis.



IHC analysis of FFPE human testis tissue stained with LIN28B antibody



Western blot analysis of LIN28B antibody and HL-60 lysate. Predicted molecular weight ~27 kDa.

Description

Lin-28 homolog B (LIN28B) is overexpressed in hepatocellular carcinoma. The heterochronic gene lin-28 is a key regulator of developmental timing in the nematode *Caenorhabditis elegans*. Similar with lin-28 proteins, LIN28B conserves a cold shock domain and a pair of CCHC zinc finger domains. Phylogenetic analysis suggests that they might arise as a result of duplication from an ancestral gene. Overexpression of LIN28B was noted in most HCC cell lines and clinical samples. A short LIN28B isoform was also identified in non-tumor liver tissue and fetal liver. Although predominantly localized in the cytoplasm, LIN28B protein shows cell cycle-dependent nuclear translocation in Huh7 cells. Induced expression of exogenous LIN28B in a tet-off cell line promoted cancer cell proliferation.

Application Notes

Titration of the LIN28B antibody may be required due to differences in protocols and secondary/substrate sensitivity.

Immunogen

A portion of amino acids 1-30 from the human protein was used as the immunogen for this LIN28B antibody.

Storage

Aliquot the LIN28B antibody and store frozen at -20oC or colder. Avoid repeated freeze-thaw cycles.

Ordering:Phone:858.663.9055 | Fax:1.267.821.0800 | Email:info@nsjbio.com

Copyright © NSJ Bioreagents. All rights reserved