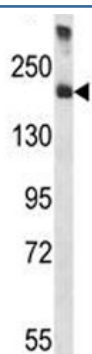


## A2M Antibody / Alpha-2-macroglobulin (F44166)

Catalog No.	Formulation	Size
F44166-0.4ML	In 1X PBS, pH 7.4, with 0.09% sodium azide	0.4 ml
F44166-0.08ML	In 1X PBS, pH 7.4, with 0.09% sodium azide	0.08 ml

[Bulk quote request](#)

<b>Availability</b>	1-3 business days
<b>Species Reactivity</b>	Human
<b>Format</b>	Antigen affinity purified
<b>Clonality</b>	Polyclonal (rabbit origin)
<b>Isotype</b>	Rabbit Ig
<b>Purity</b>	Antigen affinity
<b>UniProt</b>	P01023
<b>Applications</b>	Western blot : 1:1000
<b>Limitations</b>	This A2M antibody is available for research use only.



A2M antibody western blot analysis in human placenta tissue lysate. Predicted molecular weight: ~163/200kDa (unmodified/glycosylated).

## Description

Alpha-2-macroglobulin is a protease inhibitor and cytokine transporter. It inhibits many proteases, including trypsin, thrombin and collagenase. A2M is implicated in Alzheimer disease (AD) due to its ability to mediate the clearance and degradation of A-beta, the major component of beta-amyloid deposits. [provided by RefSeq].

## Application Notes

Titration of the A2M antibody may be required due to differences in protocols and secondary/substrate sensitivity.

## Immunogen

A portion of amino acids 1162-1192 from the human protein was used as the immunogen for this A2M antibody.

## Storage

Aliquot the A2M antibody and store frozen at -20oC or colder. Avoid repeated freeze-thaw cycles.