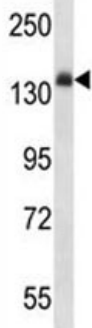


Anti-Insulin Receptor Antibody (F44014)

Catalog No.	Formulation	Size
F44014-0.4ML	In 1X PBS, pH 7.4, with 0.09% sodium azide	0.4 ml
F44014-0.08ML	In 1X PBS, pH 7.4, with 0.09% sodium azide	0.08 ml

[Bulk quote request](#)

Availability	1-3 business days
Species Reactivity	Mouse
Predicted Reactivity	Rat
Format	Antigen affinity purified
Clonality	Polyclonal (rabbit origin)
Isotype	Rabbit Ig
Purity	Antigen affinity
UniProt	P15208
Applications	Western blot : 1:1000
Limitations	This anti-Insulin Receptor antibody is available for research use only.



Anti-Insulin Receptor antibody western blot analysis in mouse liver tissue lysate. Expected molecular weight: ~156 kDa.

Description

This receptor binds insulin and has a tyrosine-protein kinase activity. When present in a hybrid receptor with IGF1R, binds IGF1.

Application Notes

Titration of the anti-Insulin Receptor antibody may be required due to differences in protocols and secondary/substrate sensitivity.

Immunogen

A portion of amino acids 546-574 from the mouse protein was used as the immunogen for this anti-Insulin Receptor antibody.

Storage

Aliquot the anti-Insulin Receptor antibody and store frozen at -20oC or colder. Avoid repeated freeze-thaw cycles.