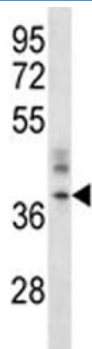


CRACM1 Antibody (F43981)

Catalog No.	Formulation	Size
F43981-0.4ML	In 1X PBS, pH 7.4, with 0.09% sodium azide	0.4 ml
F43981-0.08ML	In 1X PBS, pH 7.4, with 0.09% sodium azide	0.08 ml

[Bulk quote request](#)

Availability	1-3 business days
Species Reactivity	Human
Format	Antigen affinity purified
Clonality	Polyclonal (rabbit origin)
Isotype	Rabbit Ig
Purity	Antigen affinity
UniProt	Q96D31
Applications	Western blot : 1:1000
Limitations	This CRACM1 antibody is available for research use only.



CRACM1 antibody western blot analysis in A375 lysate.

Description

CRACM1/ORAI1 is a plasma membrane protein essential for store-operated calcium entry.

Application Notes

Titration of the CRACM1 antibody may be required due to differences in protocols and secondary/substrate sensitivity.

Immunogen

A portion of amino acids 269-298 from the human protein was used as the immunogen for this CRACM1 antibody.

Storage

Aliquot the CRACM1 antibody and store frozen at -20oC or colder. Avoid repeated freeze-thaw cycles.