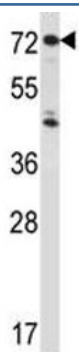


## IL1R1 Antibody (F43419)

Catalog No.	Formulation	Size
F43419-0.4ML	In 1X PBS, pH 7.4, with 0.09% sodium azide	0.4 ml
F43419-0.08ML	In 1X PBS, pH 7.4, with 0.09% sodium azide	0.08 ml

[Bulk quote request](#)

<b>Availability</b>	1-3 business days
<b>Species Reactivity</b>	Human, Mouse
<b>Format</b>	Antigen affinity purified
<b>Clonality</b>	Polyclonal (rabbit origin)
<b>Isotype</b>	Rabbit Ig
<b>Purity</b>	Antigen affinity
<b>UniProt</b>	P14778
<b>Applications</b>	Western blot : 1:1000
<b>Limitations</b>	This IL1R1 antibody is available for research use only.



IL1R1 antibody western blot analysis in HepG2 lysate.

250  
130  
95  
72  
55

IL1R1 antibody western blot analysis in mouse liver tissue lysate

## Description

The protein encoded by this gene is a cytokine receptor that belongs to the interleukin 1 receptor family. This protein is a receptor for interleukin alpha (IL1A), interleukin beta (IL1B), and interleukin 1 receptor, type I(IL1R1/IL1RA). It is an important mediator involved in many cytokine induced immune and inflammatory responses. This gene along with interleukin 1 receptor, type II (IL1R2), interleukin 1 receptor-like 2 (IL1RL2), and interleukin 1 receptor-like 1 (IL1RL1) form a cytokine receptor gene cluster in a region mapped to chromosome 2q12.

## Application Notes

Titration of the IL1R1 antibody may be required due to differences in protocols and secondary/substrate sensitivity.

## Immunogen

A portion of amino acids 422-450 from the human protein was used as the immunogen for this IL1R1 antibody.

## Storage

Aliquot the IL1R1 antibody and store frozen at -20oC or colder. Avoid repeated freeze-thaw cycles.