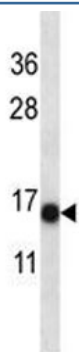


## S100A7 Antibody / Psoriasin (F43261)

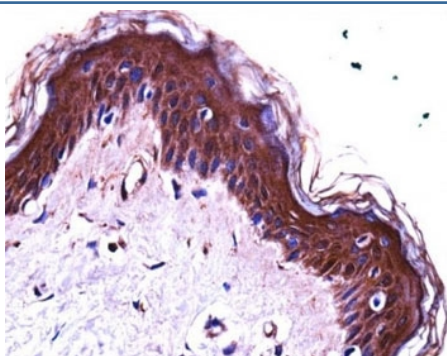
Catalog No.	Formulation	Size
F43261-0.4ML	In 1X PBS, pH 7.4, with 0.09% sodium azide	0.4 ml
F43261-0.08ML	In 1X PBS, pH 7.4, with 0.09% sodium azide	0.08 ml

[Bulk quote request](#)

Availability	1-3 business days
Species Reactivity	Human
Format	Antigen affinity purified
Clonality	Polyclonal (rabbit origin)
Isotype	Rabbit Ig
Purity	Antigen affinity
UniProt	P31151
Localization	Cytoplasmic, secreted
Applications	Western blot : 1:1000 IHC (Paraffin) : 1:10-1:50
Limitations	This S100A7 antibody is available for research use only.



S100A7 antibody western blot analysis in NCI-H292 lysate. Predicted molecular weight: 11-13 kDa.



S100A7 antibody immunohistochemistry analysis in formalin fixed and paraffin embedded human skin tissue.

## Description

The protein encoded by this gene is a member of the S100 family of proteins containing 2 EF-hand calcium-binding motifs. S100 proteins are localized in the cytoplasm and/or nucleus of a wide range of cells, and involved in the regulation of a number of cellular processes such as cell cycle progression and differentiation. S100 genes include at least 13 members which are located as a cluster on chromosome 1q21. This protein differs from the other S100 proteins of known structure in its lack of calcium binding ability in one EF-hand at the N-terminus. This protein is markedly over-expressed in the skin lesions of psoriatic patients, but is excluded as a candidate gene for familial psoriasis susceptibility. The exact function of this protein is not known.

## Application Notes

Titration of the S100A7 antibody may be required due to differences in protocols and secondary/substrate sensitivity.

## Immunogen

A portion of amino acids 2-31 from the human protein was used as the immunogen for this S100A7 antibody.

## Storage

Aliquot the S100A7 antibody and store frozen at -20oC or colder. Avoid repeated freeze-thaw cycles.