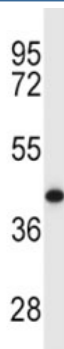


## MCL1 Antibody (F43180)

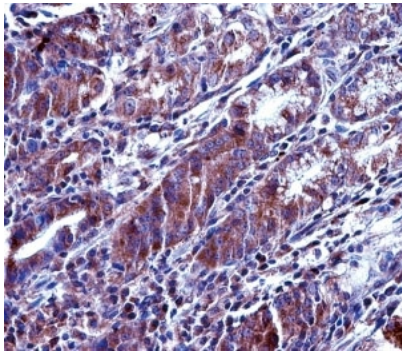
Catalog No.	Formulation	Size
F43180-0.4ML	In 1X PBS, pH 7.4, with 0.09% sodium azide	0.4 ml
F43180-0.08ML	In 1X PBS, pH 7.4, with 0.09% sodium azide	0.08 ml

[Bulk quote request](#)

Availability	1-3 business days
Species Reactivity	Human
Predicted Reactivity	Rat
Format	Antigen affinity purified
Clonality	Polyclonal (rabbit origin)
Isotype	Rabbit Ig
Purity	Antigen affinity
UniProt	Q07820
Applications	Western blot : 1:1000 IHC (Paraffin) : 1:10-1:50
Limitations	This MCL1 antibody is available for research use only.



MCL1 antibody western blot analysis in Y79 lysate. Predicted molecular weight: 37/29 kDa (isoforms 1/2).



MCL1 antibody immunohistochemistry analysis in formalin fixed and paraffin embedded human stomach tissue.

## Description

This gene encodes an anti-apoptotic protein, which is a member of the Bcl-2 family. Alternative splicing results in multiple transcript variants. The longest gene product (isoform 1) enhances cell survival by inhibiting apoptosis while the alternatively spliced shorter gene products (isoform 2 and isoform 3) promote apoptosis and are death-inducing.

## Application Notes

Titration of the MCL1 antibody may be required due to differences in protocols and secondary/substrate sensitivity.

## Immunogen

A portion of amino acids 217-245 from the human protein was used as the immunogen for this MCL1 antibody.

## Storage

Aliquot the MCL1 antibody and store frozen at -20oC or colder. Avoid repeated freeze-thaw cycles.