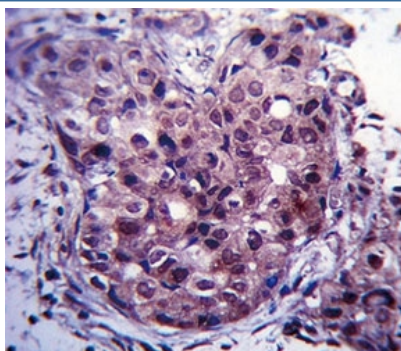


Estrogen Receptor Antibody (F43055)

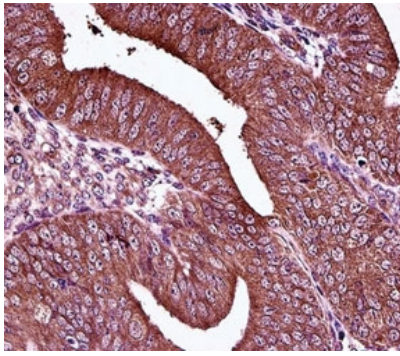
Catalog No.	Formulation	Size
F43055-0.4ML	In 1X PBS, pH 7.4, with 0.09% sodium azide	0.4 ml
F43055-0.08ML	In 1X PBS, pH 7.4, with 0.09% sodium azide	0.08 ml

[Bulk quote request](#)

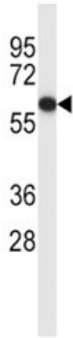
Availability	1-3 business days
Species Reactivity	Human
Predicted Reactivity	Bovine, Mouse, Pig, Rat
Format	Antigen affinity purified
Clonality	Polyclonal (rabbit origin)
Isotype	Rabbit Ig
Purity	Antigen affinity
UniProt	P03372
Applications	Western blot : 1:1000 IHC (Paraffin) : 1:10-1:50 Immunofluorescence : 1:10-1:50
Limitations	This Estrogen Receptor antibody is available for research use only.



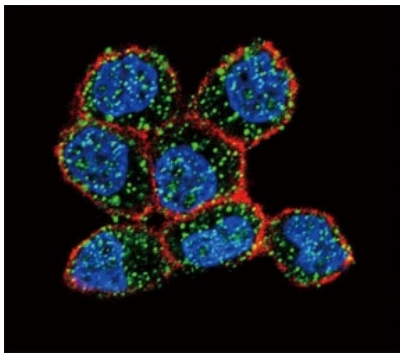
Estrogen Receptor antibody immunohistochemistry analysis in formalin fixed and paraffin embedded human breast carcinoma.



Estrogen Receptor antibody immunohistochemistry analysis in formalin fixed and paraffin embedded human uterus tissue.



Estrogen Receptor antibody western blot analysis in MCF-7 lysate. Predicted molecular weight: 65-70 kDa.



Confocal immunofluorescent analysis of Estrogen Receptor antibody with ZR-75-1 cells followed by Alexa Fluor 488-conjugated goat anti-rabbit IgG (green). Actin filaments have been labeled with Alexa Fluor 555 Phalloidin (red). DAPI was used as a nuclear counterstain (blue).

Description

This gene encodes an Estrogen receptor, a ligand-activated transcription factor composed of several domains important for hormone binding, DNA binding, and activation of transcription. Estrogen and its receptors are essential for sexual development and reproductive function, but also play a role in other tissues such as bone. ERs are also involved in pathological processes including breast cancer, endometrial cancer, and osteoporosis.

Application Notes

The stated application concentrations are suggested starting amounts. Titration of the Estrogen Receptor antibody may be required due to differences in protocols and secondary/substrate sensitivity.

Immunogen

A portion of amino acids 246-273 from the human protein (alpha) was used as the immunogen for this Estrogen Receptor antibody.

Storage

Store at 4°C for up to one month. For long term, aliquot the Estrogen Receptor antibody and store frozen at -20°C or colder.

Avoid repeated freeze-thaw cycles.

Ordering: Phone: 858.663.9055 | Fax: 1.267.821.0800 | Email: info@nsjbio.com

Copyright © NSJ Bioreagents. All rights reserved