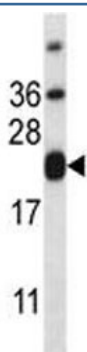


CD3e Antibody (F43038)

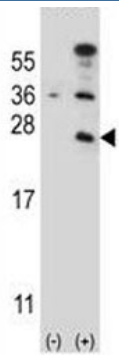
Catalog No.	Formulation	Size
F43038-0.4ML	In 1X PBS, pH 7.4, with 0.09% sodium azide	0.4 ml
F43038-0.08ML	In 1X PBS, pH 7.4, with 0.09% sodium azide	0.08 ml

[Bulk quote request](#)

Availability	1-3 business days
Species Reactivity	Human
Predicted Reactivity	Primate
Format	Antigen affinity purified
Clonality	Polyclonal (rabbit origin)
Isotype	Rabbit Ig
Purity	Antigen affinity
UniProt	P07766
Applications	Western blot : 1:1000
Limitations	This CD3e antibody is available for research use only.



CD3e antibody western blot analysis in HL-60 lysate. Expected/observed molecular weight ~23kDa.



Western blot analysis of CD3e antibody and 293 cell lysate (2 ug/lane) either nontransfected (Lane 1) or transiently transfected (2) with the CD3E gene.

Description

The protein encoded by this gene is the CD3-epsilon polypeptide, which together with CD3-gamma, -delta and -zeta, and the T-cell receptor alpha/beta and gamma/delta heterodimers, forms the T-cell receptor-CD3 complex. This complex plays an important role in coupling antigen recognition to several intracellular signal-transduction pathways. The genes encoding the epsilon, gamma and delta polypeptides are located in the same cluster on chromosome 11. The epsilon polypeptide plays an essential role in T-cell development. Defects in this gene cause immunodeficiency. This gene has also been linked to a susceptibility to type I diabetes in women.

Application Notes

Titration of the CD3e antibody may be required due to differences in protocols and secondary/substrate sensitivity.

Immunogen

A portion of amino acids 154-182 from the human protein was used as the immunogen for this CD3e antibody.

Storage

Aliquot the CD3e antibody and store frozen at -20oC or colder. Avoid repeated freeze-thaw cycles.