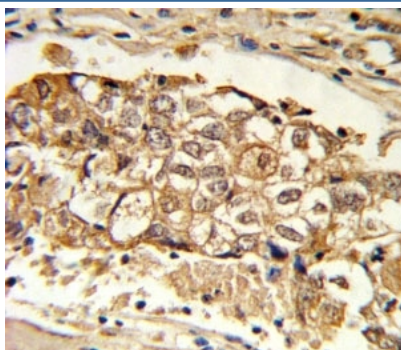


## MCL1 Antibody (F42742)

Catalog No.	Formulation	Size
F42742-0.4ML	In 1X PBS, pH 7.4, with 0.09% sodium azide	0.4 ml
F42742-0.08ML	In 1X PBS, pH 7.4, with 0.09% sodium azide	0.08 ml

[Bulk quote request](#)

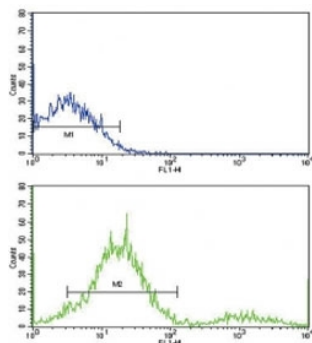
<b>Availability</b>	1-3 business days
<b>Species Reactivity</b>	Human, Mouse
<b>Format</b>	Purified
<b>Clonality</b>	Polyclonal (rabbit origin)
<b>Isotype</b>	Rabbit Ig
<b>Purity</b>	Purified
<b>UniProt</b>	Q07820
<b>Applications</b>	Western blot : 1:1000 IHC (Paraffin) : 1:10-1:50 Flow Cytometry : 1:10-1:50
<b>Limitations</b>	This MCL1 antibody is available for research use only.



IHC analysis of FFPE human breast carcinoma with MCL1 antibody

130  
95  
72  
55  
36  
28  
17

Western blot analysis of MCL1 antibody and Ramos lysate. Predicted molecular weight: 37/29 kDa (isoforms 1/2).



Flow cytometric analysis of ZR-75-1 cells using MCL1 antibody (green) compared to a negative control (blue). FITC-conjugated goat-anti-rabbit secondary Ab was used for the analysis.

## Description

The Mcl-1 protein belongs to the Bcl-2 family. Alternative splicing occurs at this locus and two transcript variants encoding distinct isoforms have been identified. The longer gene product (isoform 1) enhances cell survival by inhibiting apoptosis while the alternatively spliced shorter gene product (isoform 2) promotes apoptosis and is death-inducing.

## Application Notes

Titration of the MCL1 antibody may be required due to differences in protocols and secondary/substrate sensitivity.

## Immunogen

A portion of amino acids 191-226 from the human protein was used as the immunogen for this MCL1 antibody.

## Storage

Aliquot the MCL1 antibody and store frozen at -20°C or colder. Avoid repeated freeze-thaw cycles.