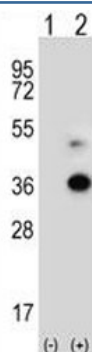


## ANGPTL7 Antibody (F42352)

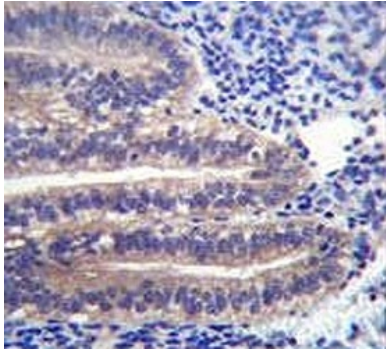
Catalog No.	Formulation	Size
F42352-0.4ML	In 1X PBS, pH 7.4, with 0.09% sodium azide	0.4 ml
F42352-0.08ML	In 1X PBS, pH 7.4, with 0.09% sodium azide	0.08 ml

[Bulk quote request](#)

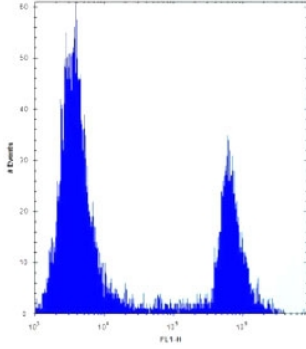
<b>Availability</b>	1-3 business days
<b>Species Reactivity</b>	Human
<b>Format</b>	Purified
<b>Clonality</b>	Polyclonal (rabbit origin)
<b>Isotype</b>	Rabbit Ig
<b>Purity</b>	Purified
<b>UniProt</b>	O43827
<b>Applications</b>	Western blot : 1:1000 IHC (Paraffin) : 1:10-1:50 Flow Cytometry : 1:10-1:50
<b>Limitations</b>	This ANGPTL7 antibody is available for research use only.



Western blot analysis of ANGPTL7 antibody and 293 cell lysate either nontransfected (Lane 1) or transiently transfected (2) with the ANGPTL7 gene. Predicted molecular weight ~35 kDa, observed at 35-50 kDa depending on glycosylation level.



ANGPTL7 antibody immunohistochemistry analysis in formalin fixed and paraffin embedded human uterus tissue.



ANGPTL7 antibody flow cytometric analysis of 293 cells (right histogram) compared to a [negative control](#) (left histogram). FITC-conjugated goat-anti-rabbit secondary Ab was used for the analysis.

## Description

Angiopoietin-like Protein 7, also called Corneal-Derived Transcript 6/CDT6, is a secreted, 45?50 kDa glycoprotein member of the angiopoietin?like family of molecules expressed in the corneal stroma, trabecular meshwork, and sclera.

## Application Notes

Titration of the ANGPTL7 antibody may be required due to differences in protocols and secondary/substrate sensitivity.

## Immunogen

A portion of amino acids 300-350 from the human protein was used as the immunogen for this ANGPTL7 antibody.

## Storage

Aliquot the ANGPTL7 antibody and store frozen at -20oC or colder. Avoid repeated freeze-thaw cycles.