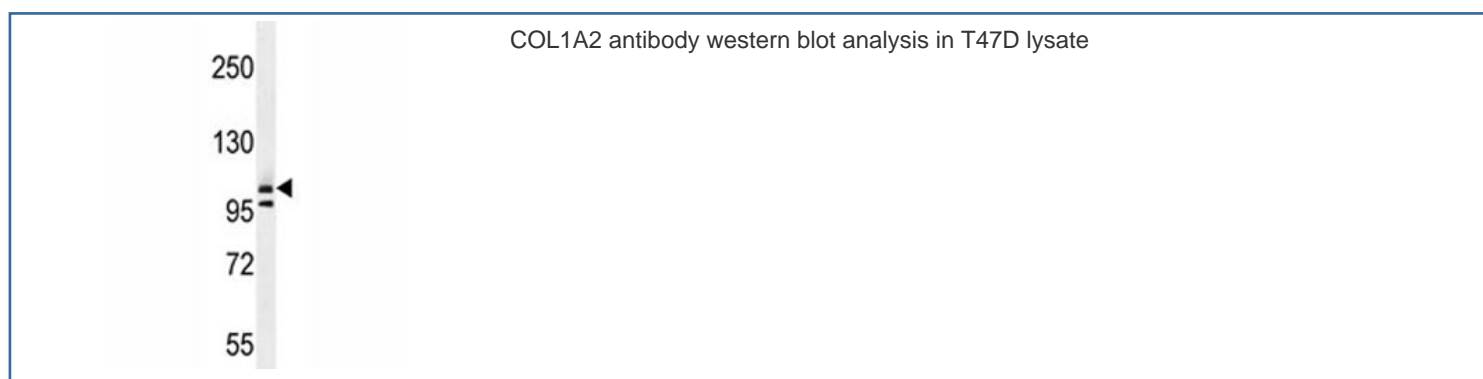


## COL1A2 Antibody / Collagen Type 1 (F41539)

Catalog No.	Formulation	Size
F41539-0.4ML	In 1X PBS, pH 7.4, with 0.09% sodium azide	0.4 ml
F41539-0.08ML	In 1X PBS, pH 7.4, with 0.09% sodium azide	0.08 ml

[Bulk quote request](#)

<b>Availability</b>	1-3 business days
<b>Species Reactivity</b>	Human
<b>Format</b>	Antigen affinity purified
<b>Clonality</b>	Polyclonal (rabbit origin)
<b>Isotype</b>	Rabbit Ig
<b>Purity</b>	Antigen affinity
<b>UniProt</b>	P08123
<b>Applications</b>	Western blot : 1:1000
<b>Limitations</b>	This COL1A2 antibody is available for research use only.



## Description

This gene encodes the pro- $\alpha 2$  chain of type I collagen whose triple helix comprises two  $\alpha 1$  chains and one  $\alpha 2$  chain. Type I is a fibril-forming collagen found in most connective tissues and is abundant in bone, cornea, dermis and tendon. Mutations in this gene are associated with osteogenesis imperfecta types I-IV, Ehlers-Danlos syndrome type VII B, recessive Ehlers-Danlos syndrome Classical type, idiopathic osteoporosis, and atypical Marfan syndrome. Symptoms associated with mutations in this gene, however, tend to be less severe than mutations in the gene for the  $\alpha 1$  chain of

type I collagen (COL1A1) reflecting the different role of alpha2 chains in matrix integrity. Three transcripts, resulting from the use of alternate polyadenylation signals, have been identified for this gene. [provided by R. Dalglish].

## Application Notes

Titration of the COL1A2 antibody may be required due to differences in protocols and secondary/substrate sensitivity.

## Immunogen

A portion of amino acids 16-43 from the human protein was used as the immunogen for this COL1A2 antibody.

## Storage

Aliquot the COL1A2 antibody and store frozen at -20oC or colder. Avoid repeated freeze-thaw cycles.