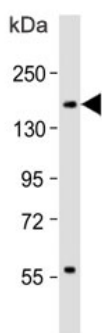


CD11b Antibody / MAC-1 / ITGAM (F40833)

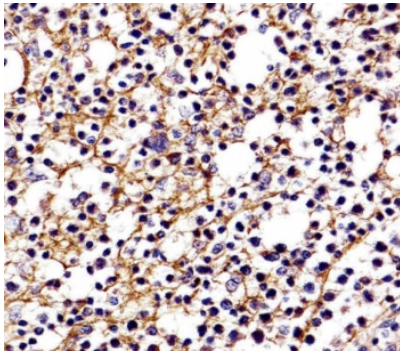
Catalog No.	Formulation	Size
F40833-0.4ML	In 1X PBS, pH 7.4, with 0.09% sodium azide	0.4 ml
F40833-0.08ML	In 1X PBS, pH 7.4, with 0.09% sodium azide	0.08 ml

[Bulk quote request](#)

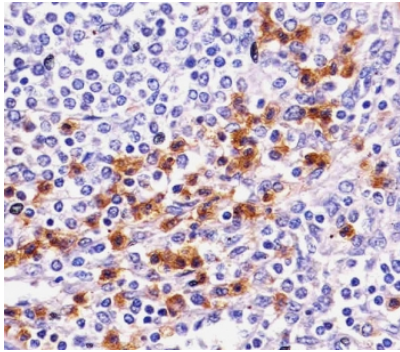
Availability	1-3 business days
Species Reactivity	Human
Format	Antigen affinity purified
Clonality	Polyclonal (rabbit origin)
Isotype	Rabbit Ig
Purity	Antigen affinity
UniProt	P11215
Localization	Cell membrane, cytoplasm
Applications	IHC (Paraffin) : 1:50-1:100 Flow Cytometry : 1:10-1:50 Western blot : 1:1000
Limitations	This CD11b antibody is available for research use only.



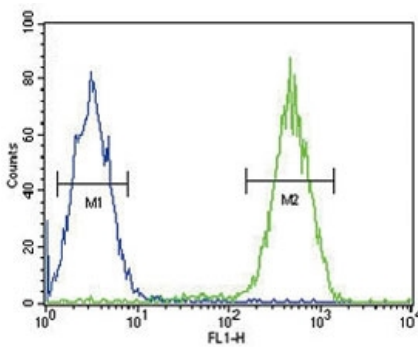
Western blot testing of human spleen lysate with CD11b antibody. Expected molecular weight: 128-170 kDa depending on glycosylation level.



IHC testing of FFPE human tonsil with CD11b antibody. HIER: boil tissue sections in pH6, 10mM citrate buffer, for 10-20 min followed by cooling at RT for 20 min.



IHC testing of FFPE human spleen with CD11b antibody. HIER: boil tissue sections in pH6, 10mM citrate buffer, for 10-20 min followed by cooling at RT for 20 min.



CD11b antibody flow cytometric analysis of Jurkat cells (right histogram) compared to a negative control cell (left histogram). FITC-conjugated goat-anti-rabbit secondary Ab was used for the analysis.

Description

CD11b is the integrin alpha M chain. Integrins are heterodimeric integral membrane proteins composed of an alpha chain and a beta chain. This I-domain containing alpha integrin combines with the beta 2 chain (ITGB2) to form a leukocyte-specific integrin referred to as macrophage receptor 1 ('Mac-1'), or inactivated-C3b (iC3b) receptor 3 ('CR3'). The alpha M beta 2 integrin is important in the adherence of neutrophils and monocytes to stimulated endothelium, and also in the phagocytosis of complement coated particles.

Application Notes

Titration of the CD11b antibody may be required due to differences in protocols and secondary/substrate sensitivity.

Immunogen

A portion of amino acids 253-282 from the human protein was used as the immunogen for this CD11b antibody.

Storage

Aliquot the CD11b antibody and store frozen at -20oC or colder. Avoid repeated freeze-thaw cycles.

Alternate Names

Granulocyte marker

Ordering:Phone:858.663.9055 | Fax:1.267.821.0800 | Email:info@nsjbio.com

Copyright © NSJ Bioreagents. All rights reserved