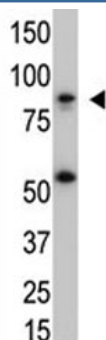


## IKK beta Antibody [clone 62AT992] (F40421)

Catalog No.	Formulation	Size
F40421-0.4ML	In 1X PBS, pH 7.4, with 0.09% sodium azide	0.4 ml
F40421-0.08ML	In 1X PBS, pH 7.4, with 0.09% sodium azide	0.08 ml

[Bulk quote request](#)

<b>Availability</b>	1-3 business days
<b>Species Reactivity</b>	Human
<b>Format</b>	Purified
<b>Clonality</b>	Monoclonal (mouse origin)
<b>Isotype</b>	Mouse IgG1
<b>Clone Name</b>	62AT992
<b>Purity</b>	Purified
<b>UniProt</b>	O14920
<b>Applications</b>	Western blot : 1:100-1:500
<b>Limitations</b>	This IKK beta antibody is available for research use only.



The IKK beta antibody used in western blot with SK-BR3 cell lysate. Predicted molecular weight ~87 kDa.

## Description

NFKB1 or NFKB2 is bound to REL, RELA, or RELB to form the NFKB complex. The NFKB complex is inhibited by I-kappa-B proteins (NFKBIA or NFKBIB), which inactivate NF-kappa-B by trapping it in the cytoplasm. Phosphorylation of serine residues on the I-kappa-B proteins by kinases (IKBKA or IKBKB) marks them for destruction via the ubiquitination pathway,

thereby allowing activation of the NF-kappa-B complex. Activated NFkB complex translocates into the nucleus and binds DNA at kappa-B-binding motifs such as 5-prime GGGRNNYYCC 3-prime or 5-prime HGGARNYYCC 3-prime (where H is A, C, or T; R is an A or G purine; and Y is a C or T pyrimidine).

## Application Notes

Titration of the IKK beta antibody may be required due to differences in protocols and secondary/substrate sensitivity.

## Immunogen

This IKK beta antibody was raised using purified His-tagged recombinant full length human IKKb.

## Storage

Aliquot the IKK beta antibody and store frozen at -20oC or colder. Avoid repeated freeze-thaw cycles.