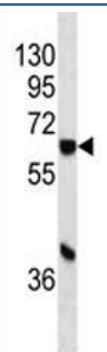


CYP1A1 Antibody [clone 655CT6.1.2] (F40404)

Catalog No.	Formulation	Size
F40404-0.4ML	In 1X PBS, pH 7.4, with 0.09% sodium azide	0.4 ml
F40404-0.08ML	In 1X PBS, pH 7.4, with 0.09% sodium azide	0.08 ml

[Bulk quote request](#)

Availability	1-3 business days
Species Reactivity	Human
Predicted Reactivity	Primate
Format	Purified
Clonality	Monoclonal (mouse origin)
Isotype	Mouse IgG1
Clone Name	655CT6.1.2
Purity	Purified
UniProt	P04798
Localization	Cytoplasmic, membrane
Applications	Western blot : 1:100-1:1000
Limitations	This CYP1A1 antibody is available for research use only.



CYP1A1 antibody western blot analysis in Jurkat lysate. Predicted molecular weight ~58kDa.

Description

This gene, CYP1A1, encodes a member of the cytochrome P450 superfamily of enzymes. The cytochrome P450 proteins are monooxygenases which catalyze many reactions involved in drug metabolism and synthesis of cholesterol, steroids and other lipids. This protein localizes to the endoplasmic reticulum and its expression is induced by some polycyclic aromatic hydrocarbons (PAHs), some of which are found in cigarette smoke. The enzyme's endogenous substrate is unknown; however, it is able to metabolize some PAHs to carcinogenic intermediates. The gene has been associated with lung cancer risk. A related family member, CYP1A2, is located approximately 25 kb away from CYP1A1 on chromosome 15.

Application Notes

Titration of the CYP1A1 antibody may be required due to differences in protocols and secondary/substrate sensitivity.

Immunogen

A portion of amino acids 377-405 from the human protein was used as the immunogen for this CYP1A1 antibody.

Storage

Aliquot the CYP1A1 antibody and store frozen at -20oC or colder. Avoid repeated freeze-thaw cycles.