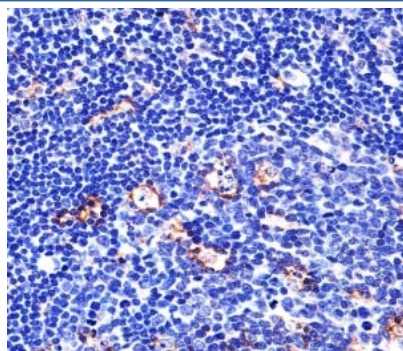


## Integrin beta 2 Antibody [clone 534CT6.2.1] (F40395)

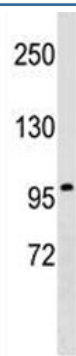
Catalog No.	Formulation	Size
F40395-0.4ML	In 1X PBS, pH 7.4, with 0.09% sodium azide	0.4 ml
F40395-0.08ML	In 1X PBS, pH 7.4, with 0.09% sodium azide	0.08 ml

[Bulk quote request](#)

<b>Availability</b>	1-3 business days
<b>Species Reactivity</b>	Human
<b>Format</b>	Purified
<b>Clonality</b>	Monoclonal (mouse origin)
<b>Isotype</b>	Mouse IgG1
<b>Clone Name</b>	534CT6.2.1
<b>Purity</b>	Purified
<b>UniProt</b>	P05107
<b>Applications</b>	IHC (Paraffin) : 1:25 Western blot : 1:100-1:1000
<b>Limitations</b>	This Integrin beta 2 antibody is available for research use only.



Immunohistochemical analysis of paraffin-embedded human tonsil using Integrin beta 2 antibody at 1:25 dilution.



Integrin beta 2 antibody western blot analysis in K562 lysate. Predicted molecular weight 85~95 kDa.

## Description

The product of this gene belongs to the integrin beta chain family of proteins. Integrins are integral cell-surface proteins composed of an alpha chain and a beta chain. This gene encodes the integrin beta chain beta 2. A given chain may combine with multiple partners resulting in different integrins. For example, beta 2 combines with the alpha L chain to form the integrin LFA-1, and combines with the alpha M chain to form the integrin Mac-1. Integrins are known to participate in cell adhesion as well as cell-surface mediated signalling. Defects in this gene are the cause of leukocyte adhesion deficiency type I (LAD1). Two transcript variants encoding the same protein have been identified for this gene.

## Application Notes

Titration of the Integrin beta 2 antibody may be required due to differences in protocols and secondary/substrate sensitivity.

## Immunogen

Purified His-tagged protein fragment was used to produced this monoclonal Integrin beta 2/CD18 antibody.

## Storage

Aliquot the Integrin beta 2 antibody and store frozen at -20oC or colder. Avoid repeated freeze-thaw cycles.