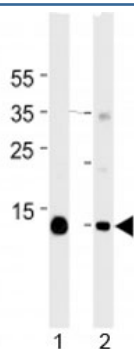


Myoglobin Antibody [clone 444CT19.2.1] (F40352)

Catalog No.	Formulation	Size
F40352-0.4ML	In 1X PBS, pH 7.4, with 0.09% sodium azide	0.4 ml
F40352-0.08ML	In 1X PBS, pH 7.4, with 0.09% sodium azide	0.08 ml

[Bulk quote request](#)

Availability	1-3 business days
Species Reactivity	Human, Mouse
Predicted Reactivity	Pig, Primate
Format	Purified
Clonality	Monoclonal (mouse origin)
Isotype	Mouse IgG1
Clone Name	444CT19.2.1
Purity	Purified
UniProt	P02144
Localization	Cytoplasmic
Applications	Western blot : 1:1000
Limitations	This Myoglobin antibody is available for research use only.



Myoglobin antibody western blot analysis in mouse 1) heart and 2) skeletal muscle tissue lysate. Predicted molecular weight ~17 kDa.

Description

This gene encodes a member of the globin superfamily and is expressed in skeletal and cardiac muscles. The encoded protein is a haemoprotein contributing to intracellular oxygen storage and transcellular facilitated diffusion of oxygen. At least three alternatively spliced transcript variants encoding the same protein have been reported.

Application Notes

Titration of the Myoglobin antibody may be required due to differences in protocols and secondary/substrate sensitivity.

Immunogen

A portion of amino acids 103-130 from the human protein was used as the immunogen for this Myoglobin antibody.

Storage

Aliquot the Myoglobin antibody and store frozen at -20oC or colder. Avoid repeated freeze-thaw cycles.