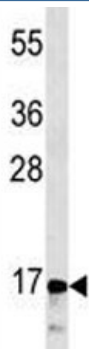


CGRP Antibody / CALCA / Calcitonin [clone 406CT21.4.3] (F40344)

Catalog No.	Formulation	Size
F40344-0.4ML	In 1X PBS, pH 7.4, with 0.09% sodium azide	0.4 ml
F40344-0.08ML	In 1X PBS, pH 7.4, with 0.09% sodium azide	0.08 ml

[Bulk quote request](#)

Availability	1-3 business days
Species Reactivity	Human
Format	Purified
Clonality	Monoclonal (mouse origin)
Isotype	Mouse IgM
Clone Name	406CT21.4.3
Purity	Purified
UniProt	P01258
Localization	Cytoplasmic
Applications	Western blot : 1:100-1:250
Limitations	This CGRP antibody is available for research use only.



CGRP antibody western blot analysis in CEM lysate

Description

Calcitonin/Calcitonin Gene Related Peptide/CGRP/CALCA causes a rapid but short-lived drop in the level of calcium and

phosphate in blood by promoting the incorporation of those ions in the bones. Katalcalcin (a cleavage product) is a potent plasma calcium-lowering peptide. [UniProt]

Application Notes

The stated application concentrations are suggested starting amounts. Titration of the CGRP antibody may be required due to differences in protocols and secondary/substrate sensitivity.

Immunogen

A portion of amino acids 56-84 from the human protein was used as the immunogen for this CGRP antibody.

Storage

Store at 4oC for up to one month. For long term, aliquot the CGRP antibody and store frozen at -20oC or colder. Avoid repeated freeze-thaw cycles.