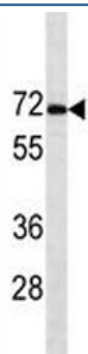


Estrogen Receptor alpha Antibody [clone 415CT16.3.2.1] (F40335)

| Catalog No. | Formulation | Size |
|---------------|--|---------|
| F40335-0.4ML | In 1X PBS, pH 7.4, with 0.09% sodium azide | 0.4 ml |
| F40335-0.08ML | In 1X PBS, pH 7.4, with 0.09% sodium azide | 0.08 ml |

[Bulk quote request](#)

| | |
|-----------------------------|---|
| Availability | 1-3 business days |
| Species Reactivity | Human |
| Predicted Reactivity | Bovine, Mouse, Pig, Rat |
| Format | Purified |
| Clonality | Monoclonal (mouse origin) |
| Isotype | Mouse IgG1 |
| Clone Name | 415CT16.3.2.1 |
| Purity | Purified |
| UniProt | P03372 |
| Applications | Western blot : 1:100-1:250 |
| Limitations | This Estrogen Receptor alpha antibody is available for research use only. |



Estrogen Receptor alpha antibody western blot analysis in MCF-7 lysate. Predicted molecular weight: 65-70 kDa.

Description

This gene encodes an estrogen receptor, a ligand-activated transcription factor composed of several domains important for

hormone binding, DNA binding, and activation of transcription. The protein localizes to the nucleus where it may form a homodimer or a heterodimer with estrogen receptor 2. Estrogen and its receptors are essential for sexual development and reproductive function, but also play a role in other tissues such as bone. Estrogen receptors are also involved in pathological processes including breast cancer, endometrial cancer, and osteoporosis. Alternative splicing results in several transcript variants, which differ in their 5' UTRs and use different promoters.

Application Notes

Titration of the Estrogen Receptor alpha antibody may be required due to differences in protocols and secondary/substrate sensitivity.

Immunogen

A portion of amino acids 246-273 from the human protein was used as the immunogen for this Estrogen Receptor alpha antibody.

Storage

Aliquot the Estrogen Receptor alpha antibody and store frozen at -20oC or colder. Avoid repeated freeze-thaw cycles.